



Photoluminescent
Products

THE ORIGINAL

Our thinking goes beyond Luminescence



Catalogue



Impressive. Reliable. Safe.



THE ORIGINAL.

Photoluminescent Products



Technology & Quality

Where safety-relevant products are intended to ensure utmost planning reliability, product certifications are indispensable.

When using EverGlow® products, our customers are always on the safe side. For being permanently up-to-date, we are involved in all relevant committees.



Welcome



Dear Customers and Business Partners,

in our catalogue we always focus on facilitating the selection of our marking products by describing individual products and their application in greater detail... in words and pictures.

Moreover, you will find useful information and interesting facts about safety marking.

We continue to be your competent partner and are at your disposal for any questions about our products.

Now, our products can also be purchased quite easily in our shop.

We are looking forward to continuing our cooperation.

Best regards
Markus Thrun

Certifications and approvals



EverGlow® is green! This statement has a double meaning. On the one hand, our products mostly shine green in the darkness, on the other hand, the certification our production according to ISO 9001 and ISO 14001 provides compliance with all environmental criteria.



REACH: EverGlow® products meet the REACH criteria and do not contain and SOVC (Substances of Very High Concern). Where we use recycled materials (such as aluminum). Moreover, no additional power supply is required when using EverGlow® products.



Thanks to our membership in the PSPA (Photoluminescent Safety Products Association) we have been intensifying the use photoluminescent products on shore, at sea, and in the air for several years in conjunction with other international manufacturers.

Utilization of EverGlow®-Products



Product labeling rules: The EverGlow® product line offers different product qualities with various light intensities and basic materials using newly developed fluorescent pigments.

Luminance EverGlow® products are designed for indoor use (Exception: the assembly point sign made of aluminum). Please inquire separately for outdoor durability.

The respective quality of each product can be recognized by **first two numbers** of the order number.

15. EverGlow® HI 150 Aluminum,
EverGlow® HI 150 Aluminum, depending on the product 0.2 mm or 0.56 mm thick, photoluminescent coated. Luminance class C.

17. EverGlow® HI 300 Aluminum,
EverGlow® HI 300 Aluminum, depending on the product 0.2 mm or 0.56 mm thick, photoluminescent coated. Luminance class D.

38. EverGlow® 150 Film Products
(Not for walking on! Not suitable for printing.)
For example, high-quality self-adhesive film 0.1 mm, photoluminescent coated. Luminance class C.

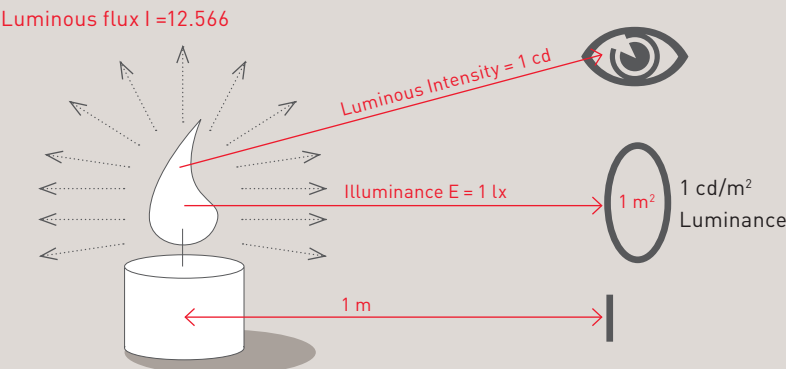
51. Aluminets
Aluminum 0.56 mm thick, nonfading and weather-resistant.

60. Acrylic film with photoluminescent coating
With extremely high light intensity. Not for walking on! Not suitable for printing

TLxx Performance in Triple Loading
Through a special pigment composition Triple Loading products load up three times as fast as usual products. TL products are very suitable for the usage with LED lights. (for more information look on page 43)

Cxx
EverGlow® C products are daylight fluorescent and photoluminescent which is why they are perfectly suitable for marking of hazardous areas which have to be visible during the day and at night.

LIGHT ENGINEERING PARAMETERS



The figure on the left shows the connection between different photometric parameters which are always used for describing photoluminescent products.

In this respect, the luminous flux hitting the product surface is relevant for the charging of photoluminescence. The luminous flux per unit area is indicated in lux.

The visibility of an object is mainly dependant upon the brightness of the surface measured in cd/m². The higher this value, the brighter the object, and the better the visibility.

Charging of photoluminescent products is still dependant upon the colour temperature of the light source (the higher, the better), spectral distribution of the light source (blue component as high as possible), time, temperature, pigment type, radiation angle of the light source (in particular for LED).

classification of luminance classes according to ISO 17398

Luminance	after 10 minutes	after 60 minutes	decay time
HI 150 (Class C)	150mcd/m²	22mcd/m²	2100 min.
HI 300 (Class D)	300mcd/m²	45mcd/m²	4100 min.
HI 450 (Class D)	450mcd/m²	70mcd/m²	4500 min.
HI 600 (Class E)	600mcd/m²	100mcd/m²	8100 min.

Luminous flux = 12.566 lm
Luminous Intensity: I=12.566 lm/4 sr = 1 cd
Illuminance E= 1 lm/m²= 1 lx
Luminance L= 1 cd/m²



Our products



Welcome	6	Safety Signs for escape, first aid and fire	39-44
Product certifications	7	Escape and fire safety signs TL 300	45
Utilization of EverGlow®-products	8 - 9	Flag and angled signs	46-47
Profile systems	14-15	New safety marking	48
Guidance strips	16-17	Accessories for safety signs	49
Stair markings	18-19	Phosphorescent pigments	52-53
Floor markings	20-22	Semi-finished products	54-55
Door markings	24-25	lumipro® Deluxe	56-57
Diverse marking products	26	Installation note	58-59
Protection profiles	27	Order form	61
Marking tapes	28	About us	62-63
Marking strips	29		
EverGlow® C-products	30		
Marking tapes	31		
Coating systems	34-35		

- Individual, competent consulting – without any waiting times.
- Luminance which always exceeds legal requirements.
- Product variety.
- Product development.
- Thanks to a dense network of sales partners, we are there for you – everywhere.
- Products in stock = shipment on the same day.
- Quick and easy handling of our online shop.
- Inquiry handling within one business day.
- Special designs at the customer's request.
- All products in conformity with REACH.
- Immediate implementation of new directives.

Photoluminescent products from EverGlow® fully comply with DIN 67510. Upon complete saturation (activation), our products achieve a discharge time of at least 35 to 100 hours. The safety means is thus maintained for a sufficiently long period. Even without any current!



In emergencies every second counts



In emergencies the evacuation of people is the primary objective.

There are different standards regarding the design of photoluminescent safety way guidance systems, which are included in the planning and installation of safety way guidance systems as technical rules. In particular, DIN 67510 Part 3 describes the German state of the art technology regarding safety way guidance systems.

On the international level, the standard ISO 16069 specifies safety way guidance systems.

In order to evaluate the products regarding their lighting suitability, the standard ISO 17398 further requires the manufacturer to provide additional information on the luminance for specified excitation scenarios.

- a) Excitation with standard illuminant D65 for 20 minutes at 200 Lux

b) Excitation with fluorescent lamp (4,300 K) for 15 minutes at 50 Lux
- c) Excitation with fluorescent lamp (3,000 K) for 15 minutes at 25 Lux

d) Excitation with LED (6000 K) for 15 min at 50 LUX

EverGlow® Values for Scenario a)

Luminance in mcd/m²				
	2 Min.	10 Min.	30 Min.	60 Min.
HI 150	635,0	161,9	52,4	24,2
HI 300	1156,0	304,0	103,9	48,2
TL 300	1411,0	319,0	98,2	43,5

EverGlow® Values for Scenario b)

Luminance in mcd/m²				
	2 Min.	10 Min.	30 Min.	60 Min.
HI 150	96,2	35,5	13,8	7,0
HI 300	212,0	79,3	35,7	18,3
TL 300	437,0	148,7	50,7	21,9

EverGlow® Values for Scenario c)

Luminance in mcd/m²				
	2 Min.	10 Min.	30 Min.	60 Min.
HI 150	30,2	12,6	4,5	2,2
HI 300	80,0	39,4	17,5	9,2
TL 300	155,2	62,4	22,7	9,9

EverGlow® Values for Scenario d)*

Luminance in mcd/m²				
	2 Min.	10 Min.	30 Min.	60 Min.
HI 150	65	30	13	7
HI 300	115	54	22	11
TL 300	422	141	47	21

* In almost all buildings, lighting using LED technology is available today. This is why the question is whether LED luminaires are suitable for loading of photoluminescent products. But LED types cannot be standardized as easily as fluorescent lamps, for example.

As a general rule, loading efficiency increases with the colour temperature. EverGlow® TL products are especially suitable for LED lighting (refer to scenario d). Please make sure of a sufficient lighting intensity (measured with a suitable lux meter) as well as illumination of the product (impact angle). In case of further questions, just contact our experts.

For further information on the execution of a risk analysis, please refer to www.everglow.de



ASD-STAN EN 4731 P1

“Aerospace series Spectral quality of LED luminaires used with photoluminescent marking systems” does describe a method to establish the quality of LED luminaires but this seems to be quite laborious for normal users.

This is why we recommend to perform a test measurement in advance.

On shore, at sea, and in the air.

Optical safety guidance systems on shore, at sea, and in the air (aircrafts) entail highest demands on design and functionality. At the same time, the lighting conditions on the spot require a photoluminescent product which is convincing regarding its luminance and loading speed and satisfies the legal requirements (ISO, IMO, FAA) at the place of use at any time.

The guidance marking for photoluminescent safety way guidance systems must have a minimum width of 5 cm. The minimum width of stripes can be reduced to 2.5 cm when the luminance after 10 min is not less than 100 mcd /m² and after 60 min is not less than 15 mcd/m².

Profile systems

Convincing in design and functionality

For near-ground safety systems regarding ASR A3.4/3 IM0



Profile systems for safety guidance systems

Flat profile

Easy installation: Discreet installation by means of screws, rivets and / or partial bonding contribute to optimized installation times. The well-shaped end caps provide for a clean finish.

Components:

Basic flat profile

for Guidance strips "Flex 1" height 3,7 cm

Material: Aluminum. Colours on request

Height: 4,15 cm , **Length:** 3 m

Order No. 90.7754

28,95/pc.

Cover plate

Material: plastic, light

Order No. 90.7757

2,85/pc.

Rigid way-guidance strips Flex 1

Material: Alu HI 300. with ceramic coating self-adhesive

Height: 3,7 cm , **Length:** 1 m, **Strength:** 0,2 mm

neutral without print

Order No. 17.7730

from 1

25,25

from 10

24,35

from 25

21,95

With print "EXIT" right

Order No. 17.7755

21,65

With print "EXIT" left

Order No. 17.7756

21,65

Way guidance for flat profile

For adhesion to profile upper part. 1 set = 10 pcs.

Material: Aluminium Alu TL 300, with ceramic coating self-adhesive

Height: 37 mm , **Length:** 37 mm, **Strength:** 0,2 mm

Escape route right E001

Order No. TL17.7751

21,55/Set

Escape route left E002

Order No. TL17.7752

21,55/Set

Arrow right/left

Order No. TL17.7753

21,55/Set



ProFIL 50 charging optimized

Your benefit: According to a revised national regulation, the strip width can be reduced significantly. This reduced profile width of 50 mm allows for convenient integration in the design of your building. A well-planned angle of the profile ensures optimized charge through ambient light.

Easy installation: The concealed fixing of screws, rivets and partial bonding allows optimized installation times. The well-designed cover plates provide a neat edge.

Components:

Basic profile ProFIL 50 (angular)

Fitting for guidance strip "FLEX 1", Height 5 cm

Material: Aluminum anodized, silver

Height: 5,4 cm , **length:** 3 m

Order No. 90.7732

41,00/pc.

Cover Plate for Profile 50 (straight)

Material: Plastic light

right

Order No. 90.7733

2,85/pc.

left

Order No. 90.7734

2,85/pc.

Guidance strip "Flex 1" for ProFIL 50 (angular)

Material: Alu HI 300/ Alu TL 300, photoluminescent

with ceramic coating, self-adhesive

Height: 5 cm , **Length:** 1 m, **Strenght:** 0,2 mm

Two different qualities:

HI 300

Order No. 17.7696

from 1

34,20

from 10

32,70

from 25

31,35

TL 300

Order No. TL17.7696

38,85

37,90

36,55

Way-guidance marking (angular)

For adhesion to profile upper part. 1 set = 10 pcs.

Material: Aluminum, photoluminescent,

with ceramic coating, self-adhesive

Height: 50 mm , **Length:** 50 mm, **Strenght:** 0,2 mm

Two different qualities:

Escape route right

HI 300

Order No. 17.7697

from 1

25,75

from 10

24,65

from 25

23,30

TL 300

Order No. TL17.7697

Escape route left

HI 300

Order No. 17.7698

Arrows right/left

TL 300

Order No. TL17.7698

HI 300

Order No. 17.7699

TL 300

Order No. TL17.7699

25,75

32,35

25,75

25,75

24,65

32,35

24,65

24,65

23,30

27,45

23,30

27,45



Strips

Individual usage



Guidance markings for floor and wall

For a guidance system near the floor in various designs for individual use. Wall fastening up to 40.0 cm above the floor. Also available in C quality. Way-guidance markings (Photoluminescent coated, to be screwed, made of aluminum 0.56 mm) On request also available in self-adhesive design.

According to regulations in Germany the guidance marking of photoluminescent safety way guidance systems must have a minimum width of 5 cm. The minimum width of stripes can be reduced to 2.5 cm if luminance achieves the following values: Not less than 100 mcd/m² after 10 minutes and not less than 15 mcd/m² after 60 minutes.

Guidance strip Alu 0,56 mm

HI (Photoluminescent coated, to be screwed, made of aluminum 0.56 mm)
On request also available in self-adhesive design



Width: 5,0 cm, Length: 100 cm	HI 300	Order No. 17.4970	29,75 /pc.
Width: 5,0 cm, Length: 100 cm	HI 150	Order No. 15.4970	17,20 /pc.
Width: 7,5 cm, Length: 100 cm	HI 150	Order No. 15.4971	23,80 /pc.
Width: 10 cm, Length: 100 cm	HI 150	Order No. 15.4972	29,65 /pc.

Guidance strip Alu 0,2 mm

Photoluminescent coated, self-adhesive, made of aluminum 0,2 mm
Width: 5,0 cm, Length: 100 cm HI 150 Order No. 15.4976 19,90 /pc.
Width: 10 cm, Length: 100 cm HI 150 Order No. 15.4978 36,50 /pc.

Guidance strip Alu 0,2 mm EverGlow® C -Quality

Photoluminescent coated, self-adhesive, made of aluminum 0,2 mm
Width: 5,0 cm, Length: 100 cm C 150 Order No. C15.4976 42,75 /pc.
Width: 7,5 cm, Length: 100 cm C 150 Order No. C15.4977 64,75 /pc.
Width: 10 cm, Length: 100 cm C 150 Order No. C15.4978 87,30 /pc.

Escape signs

Escape signs (green/transparent, self-adhesive, non-photoluminescent)

Height: 5,0 cm, Width: 10 cm	right	Order-No. 90.4973R	5,30 /pc.
Height: 10 cm, Width: 20 cm	right	Order-No. 90.4975R	6,95 /pc.
Height: 5,0 cm, Width: 10 cm	left	Order-No. 90.4973L	5,30 /pc.
Height: 10 cm, Width: 20 cm	left	Order-No. 90.4975L	6,95 /pc.



Guidance strip Flex 1

Universally useful. Aluminum 0.2 mm thick, photoluminescent coated, with ceramic surface finish, self-adhesive, anti-slip.



			from 1	from 10	from 25
Width: 2,5 cm, Length: 100 cm	HI 300	Order-No. 17.7656	17,70		
Width: 3,7 cm, Length: 100 cm	HI 300	Order-No. 17.7730	25,25	24,35	21,95
Width: 3,7 cm,Length: 100 cm	TL 300	Order-No. TL17.7730	29,15	28,40	26,85
Width: 5,0 cm, Length: 100 cm	HI 300	Order-No. 17.7696	35,60	31,55	30,30
Width: 5,0 cm, Length: 100 cm	TL 300	Order-No. TL17.7696	38,85	37,90	36,55



OUR THINKING GOES BEYOND LUMINESCENCE.

Stair markings

Safe tread

According to international codes and standards, stairs, stringers, handrails and ramps in the course of escape routes should be marked so that the start, middle, and end of the escape route is clearly recognizable.



Stair markings

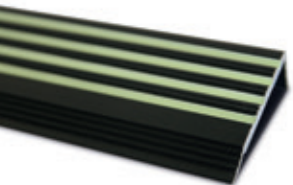
Stair nosings HI 450 Photoluminescent sections for retrofitting.

These profiles can be used to contribute to the restoration of stairs out of natural stone, terrazzo, pavement and wood. They are suitable for new installation on finished and top coated stairs and for repairing the leading edges of steps as well as covering and avoiding smaller outbreaks. The extremely strong photoluminescent configuration is protected in the depression between the grooves.



The luminance of each groove is about 700 mcd/m² after 10 minutes, which results in a luminance for the entire surface (measured over 4 grooves) of around 450 mcd/m².

Drill holes in the rear receiving channel as well as other colors and lengths available on request.



Stair nosing HI 450

Material: Alu HI 450

Grey:

Width: 3,5 cm, Length: 100 cm, Height: 0,3 cm Order-No. 90.020007D 38,75 /pc.

Black:

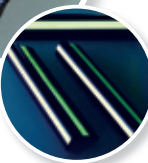
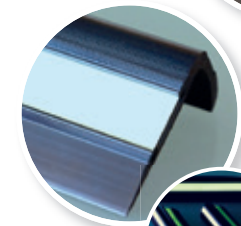
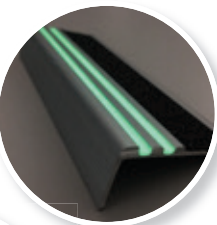
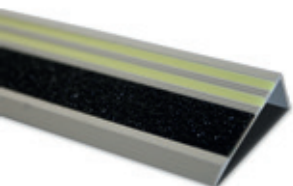
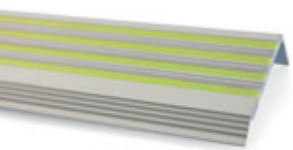
Width: 6 cm, Length: 100 cm, Height: 2,3 cm Order-No. 90.020004D 59,55 /pc.

Silber:

Width: 6 cm, Length: 100 cm, Height: 2,3 cm Order-No. 90.020005D 59,55 /pc.

Grey with anti-slip strip R11:

Width: 5,2 cm, Length: 100 cm, Height: 2,0 cm Order-No. 90.020009D 48,10 /pc.



Stair nosing plastic

Material: plastic

Width: 5,7 cm, Length: 100 cm Order-No. 90.040016ATS 50,50 /pc.

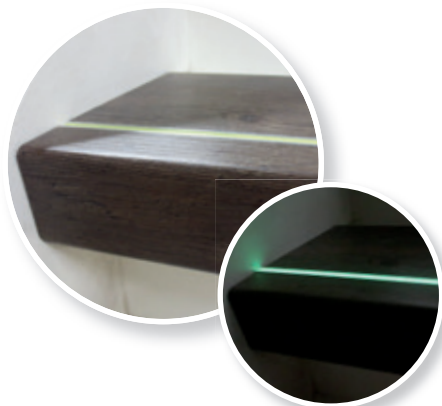
A special plus:
Depending on the local conditions and luminous quality, different luminous qualities matching the profile can be selected for the aluminum stripe. By default, the profile is delivered with a marking stripe of Class D.

lumipro® U-Profil

Lumipro® U-Profil our new product for the optical safety guidance systems! Ideal for the use in stairs including floor coverings and if applicable, as an expansion gap. The profile is made of aluminum and is filled with a special photoluminescent resin.

The luminosity measures 450/70 mcd / m² in accordance with DIN 67510 standards and provides a stark contrast to the rest of the ground.

The absorption of light during the day provides visibility at dusk and at night.



U-Profil

Material: Alu HI 450

Width: 1 cm, Length: 100 cm, Height: 0,6 cm Order-No. 90.020011D 24,90 /pc.



Stair marker neutral

Material: Alu HI 300, 0,56 mm

90° angled, self-adhesive, ceramic coating

Width: 5 cm, Length: 20 cm, Height: 4,5 cm Order-No. 17.7490

from 1	from 10	from 25	from 100
5,80	5,45	5,20	4,80



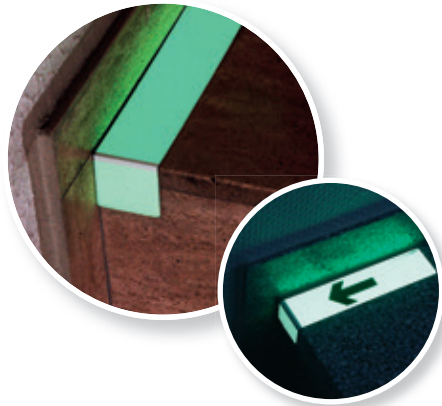
Stair marker with arrow

Material: Alu HI 300, 0,56 mm

90° angled, self-adhesive, ceramic coating

Width: 4 cm, Length: 18 cm, Height: 3 cm

Arrow upwards	Order-No. 17.US7490U	from 1	from 10	from 25	from 100
Arrow downwards	Order-No. 17.US7490D	5,80	5,45	5,20	4,80

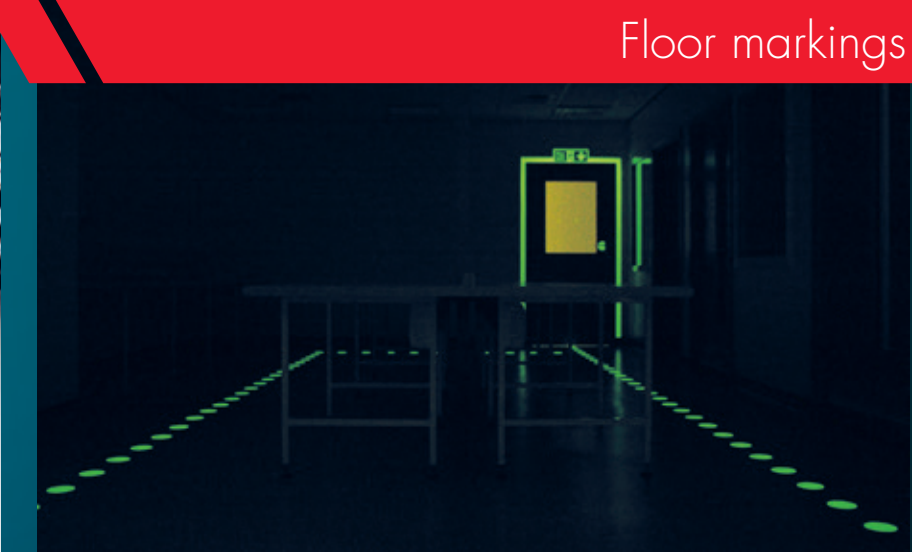


Floor marking

The Original

Abrasion-resistant planning safety due to high luminosity. Montage friendly.

Guidance marking on the floor is considered to be continuous if at least three markings per meter are installed at regular distances. The markings must have a minimum diameter or an edge length of 5 cm.



Floor markings

Guidance strips Star 1

Material: Aluminum HI 150, 1,5 mm thick
Rigid way-guidance strips with slots star 1 Aluminum HI 150 1.5 mm thick, photoluminescent coated, with ceramic coating. In addition equipped with 2 slots and a hole for quick and easy mounting (e.g. to a grill).
Width: 5 cm, Length: 22 cm **Order-No. 15.7497** **4,90 /pc.**
Width: 5 cm, Length: 50 cm **Order-No. 15.7496** **8,90 /pc.**
Width: 5 cm, Length: 100 cm **Order-No. 15.7495** **17,10 /pc.**

Guidance strips Star 1 with two green arrows

Material: Alu HI 300, 1,5 mm thick
Photoluminescent coated, with ceramic coating. In addition equipped with 2 slots and a hole for quick and easy mounting (e.g. to a grill).
Width: 5 cm, Length: 100 cm **Order-No. 17.7498** **42,75 /pc.**

Discs

Material: Aluminum HI 300
1.5 mm incl. drill hole.
This article is especially suited for permanent mounting on grids. 1 Pack = 10 Pieces
complete diameter: 10 cm **Order-No. 17.G7401** **141,20 /pack**
with arrow diameter: 10 cm **Order-No. 17.G7470** **141,20 /pack**

Attachment with bolts 1 pack = 25 pcs.

Order-No. 91.2003 **47,30 /pack**

Disc with chevron (sublimation print)

Material: Aluminium 1mm
Extremly resistant against any kind of abraision or chemical treatments. Luminance 700 mcd/m² after 10 minutes, Unit = 10 discs

		from 1	from 10	from 25	from 50
Diameter: 10 cm	Order-No. 90.020013E	224,50	213,50	205,00	195,00

Floor markings (Discs)

Material: Alu HI 300, 0,2mm
Foor-marking arrows / discs with directional arrow green/photoluminescent, self-adhesive with anti-slip effect high long-term adhesion due to 3M-special adhesive 1 set = 10 pieces
Prices are per set; sets are subject to change by big amounts.

With arrow green/photoluminescent:		from 1	from 10	from 25
Diameter: 9,5 cm	Order-No. 17.7470	22,80	21,50	19,50
Diameter: 12,5 cm	Order-No. 17.7471	35,00	30,95	28,20
Fully photoluminescent:				
Diameter: 5,0 cm	Order-No. 17.7400	20,15	18,70	17,50
Diameter: 9,5 cm	Order-No. 17.7401	66,30	65,85	60,50

Floor-marking arrows (Rectangle)

Material: Alu HI 300, 0,2mm
directional arrow green/photoluminescent, self-adhesive, high long-term adhesion due to 3M-special adhesive, anti-slip effect; 1 set = 10 pieces
Prices are per set; sets are subject to change by big amounts.

Lenght: 17,5 cm, Width: 11 cm	Order-No. 17.7473	65,85	58,30	55,35
--------------------------------------	--------------------------	--------------	--------------	--------------

Carpet Way Dot

Material: ABS plastics, HI 300
Carpet Way Dot TM carpet markers allow a fast, simple method to mark exit guidance in loop-pile carpeted areas. Normal vacuum or wet carped cleaning will not affect the dots. The backing material is composed of plastic- the markings are based on Aluminum 0,2 mm Dots for flat, sheared, woven carpet on requestt. 1Set=10 pc.
Prices are per set; sets are subject to change by big amounts.

With Arrow: diameter: 5 cm	Order-No. 17.US1723	62,50	59,30	56,15
All-over: diameter: 5 cm	Order-No. 17.US7400	65,30	61,75	58,30

Footprints

Material: Alu HI 300, 0,2mm
Measurements: 21 cm x 8,5 cm
Footprint photoluminescent, self-adhesive, with anti-slip effect.

Right foot	Order-No. 17.7654	7,10	6,40	6,00
Left foot	Order-No.17.7655	7,10	6,40	6,00

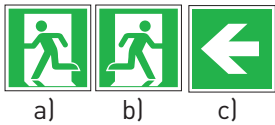
Floor marking

The Original

Abrasion-resistant planning safety due to high luminosity. Montage friendly.



Photoluminescent products



Floor marking escape signs
Material: Film HI 150, 40x40 cm
Floor marking system according to ISO 16069. International escape route symbols with arrow in special film quality with anti-slip surface laminate: R10.



a) Escape route left	Order-No. 90.4966	from 1	from 10	from 25
b) Escape route right	Order-No. 90.4967	52,40	47,20	44,65
c) Arrow	Order-No. 90.4968	52,40	47,20	44,65
d) Escape route and arrow 20x10 cm	Order-No. 90.4969	14,30	11,40	10,15

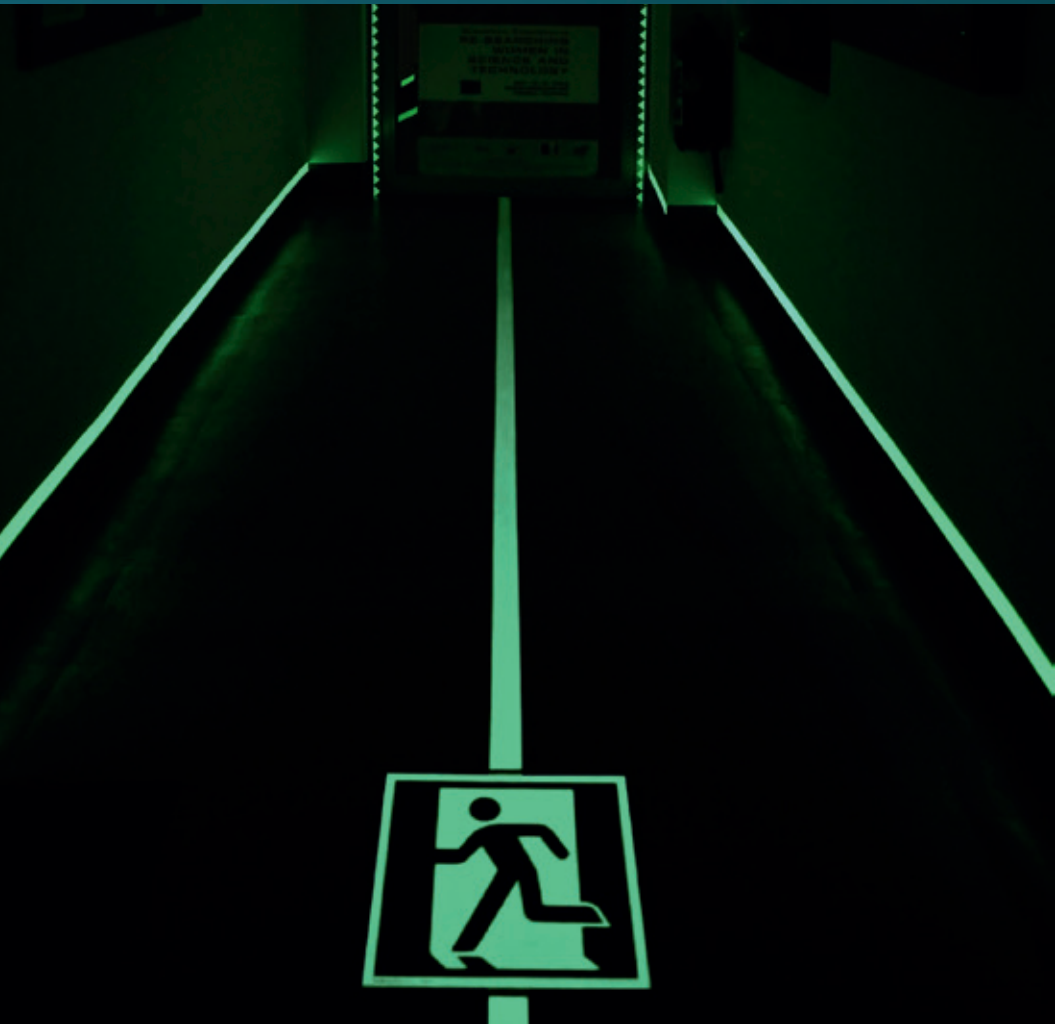


Floor Marking - Semicircle escape route Material: green/photoluminescent, self-adhesive with anti-slip		
75 x 35 cm Semicircle	Order-No. 90.4981	44,90 /Pc.

Floor Marking - Semicircle fire extinguisher Material: green/photoluminescent, self-adhesive with anti-slip		
75 x 35 cm Semicircle	Order-No. 90.4982	44,90 /Pc.



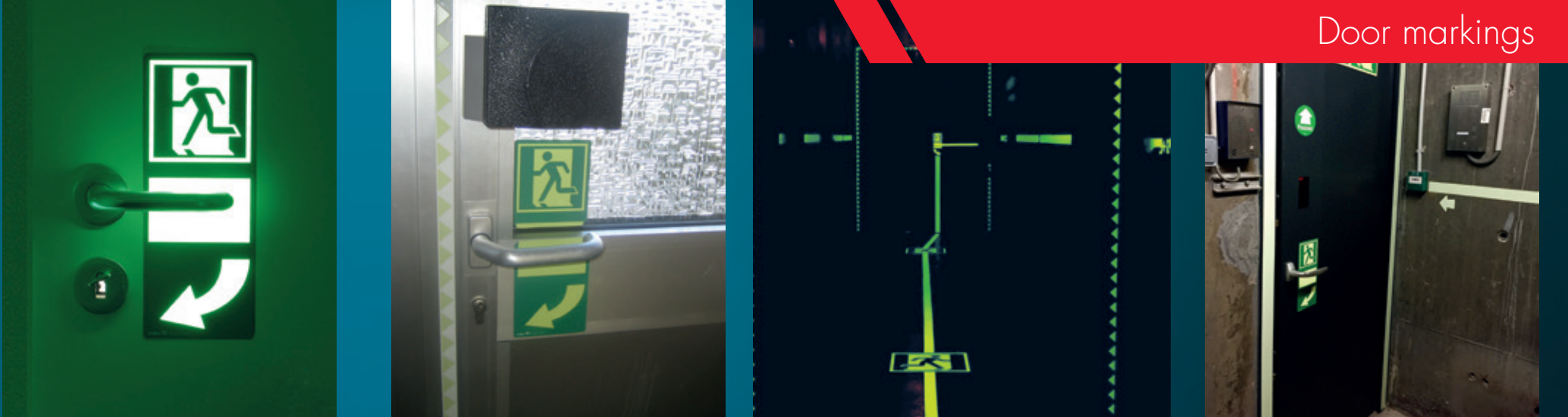
Lumipro[®] Soil nail with Reflector Material: ABS-Plastic and Resin Height 1,1 cm Compression Load 10 t, class E, 1400 mcd/m ² photoluminescent				
Round - Compression Load 10 t				
Diameter: 10,2 cm, Height 2 cm		from 1	from 10	from 25
Order-No. 90.020001E		19,15	18,65	18,25
Rectangle - Compression Load 16 t				
10,2 x 10,2 cm, Height 2 cm		from 25	from 50	
Order-No. 90.020003E		23,00	22,50	21,30



Door markings

Easy installation. Permanent safety.

Mark the doors and the door handles, which lead to the emergency exit.



a) b)

Door handles background
Material: Alu HI 150/TL 300, 0,2 mm
green/photoluminescent, self-adhesive



		from 1	from 10	from 25	from 50
a) For door handle (right turn)					
Width: 10 cm, Length: 25,5 cm					
HI 150	Order-No. 15.7535	7,50	7,10	6,70	6,45
Width: 10 cm, Length: 25,5 cm					
TL 300	Order-No. TL17.7535	13,20	11,90	11,10	10,50
b) For door handle (left turn)					
Width: 10 cm, Length: 25,5 cm					
HI 150	Order-No. 15.7540	7,50	7,10	6,70	6,45
Width: 10 cm, Length: 25,5 cm					
TL 300	Order-No. TL17.7540	13,20	11,90	11,10	10,50



Cylinder lock surrounding - small product - great effect
Material: PVC, PET laminated
1 pack = 3 Sets. Photoluminescent cylinder lock border and marking sticker all in one product! High luminosity, (200 mcd/m² after 10 minutes); Fits most standard profile cylinder locks



		from 1	from 10	from 25
Fits for most standard cylinders	Order-No. 90.020012C	5,40	4,85	4,30



Panic bar background with escape route sign
Material: EverGlow HI 150, Alu 0,2mm mit DKB 3M 468
100 x 7,5 cm

Panic bar background right	Order-No. 15.9010	42,35
Panic bar background left	Order-No. 15.9020	42,35

Door marking roll
Material: Film HI 150
photoluminescent/white, self-adhesive
Width: 3 cm, Length: 12 m
Width: 3 cm, Length: 25 m
Width: 6 cm, Length: 12 m
Width: 6 cm, Length: 25 m

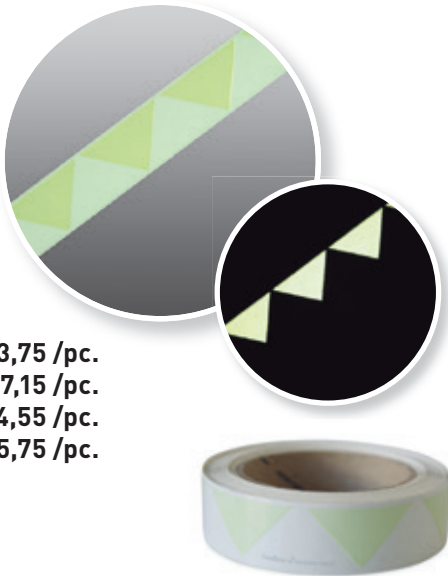
Door marking stripes
Material: Film HI 150/300
photoluminescent/white, self-adhesive
Width: 6 cm, Length: 1 m HI 150
Width: 2 cm, Length: 1 m HI 300
Width: 3 cm, Length: 1 m HI 300

EverGlow®-Door marking stripes
Material: Film HI 150
Diameter: 10 cm, photoluminescent/white, self-adhesive.
A useful addition to the photoluminescent guidance systems.
In case of fire, they aid in quick orientation.
Text "Drücken"
Text "Ziehen"
Double-sided for glass doors:
Text "Drücken/Ziehen"

Your language available on request

Order-No. 38.7450
Order-No. 38.7451
Order-No. 38.7452
Order-No. 38.7453

53,75 /pc.
97,15 /pc.
94,55 /pc.
175,75 /pc.



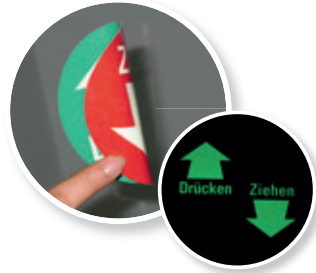
Order-No. 15.7397
Order-No. 17.7395
Order-No. 17.7396

20,30 /pc.
20,45 /Pc.
26,05 /Pc.



Order-No. 38.4960
Order-No. 38.4961
Order-No. 38.4962

5,70 /Pc.
5,70 /Pc.
13,40 /Pc.



Diverse marking products

Individual usage

Simple products with high impact.



Phosphorescent background

Material: Aluminum HI 150/HI 700, Film HI 150
Aluminum plate phosphorescent Film, self-adhesive Range of use:
Background plate for use behind safety equipment. E.g.: cut-off valves, safety ventilation,
emergency switch, not for screen-printing

Width: 62 cm, Height: 42 cm	Alu HI 150	Order-No. 15.7521	96,55 /pc.
Width: 84,1 cm, Height: 59,4 cm	Alu HI 150	Order-No. 15.4979	140,70 /pc.
Width: 62 cm, Height: 42 cm	Film HI 150	Order-No. 38.7520	43,70 /pc.
Width: 84,1 cm, Height: 59,4 cm	Film HI 150	Order-No. 38.4979	111,80 /pc.
Width: 100 cm, Height: 60 cm	Alu HI 700	Order-No. 90.020006E	411,00 /pc.



Background for fire extinguisher

Background illumination plate for fire extinguishers phosphorescent 16. EverGlow® M Alu Aluminum,
0.2 mm or 0.56 mm thick, photoluminescent coated. With progressive light intensities from
55 mcd/m² up to 150 mcd/m² after 10 min

Width: 39,5 cm, Length: 59 cm	Order-No. 16.7525	36,77 /pc.
Width: 50 cm, Length: 80 cm	Order-No. 16.7526	61,45 /pc.
Width: 58,5 cm, Length: 115 cm	Order-No. 16.7527	92,35 /pc.

Arrow / dot markers in sheets

Material: Film TL 150
Phosphorescent, self-adhesive. Ideal for marking e.g. light switches and armatures.

	from 1	from 10	from 25	from 100
Set small, round diameter 1.6 cm, 40 pieces/sheet Order-No. TL38.7460	4,25	3,95	3,55	3,30
Set small, big diameter 2.5 cm, 15 pieces/sheet Order-No. TL38.7461	4,25	3,95	3,55	3,30
Set Arrow narrow: Width: 1.8 cm, Height: 2.7 cm, 20 pieces/sheet Order-No. TL38.7462	4,25	3,95	3,55	3,30
Set Arrow wide: Width: 1.8 cm, Height: 2.7 cm, 20 pieces/sheet Order-No. TL38.7463	4,25	3,95	3,55	3,30

Protection profiles

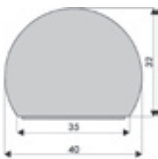
Protection profiles made of high quality, non-aging polyurethane foam for protection and identification of
obstacles, Photoluminescence Class C.

Temperature resistant from -40° C to + 100° C, self-adhesive (high tack acrylic adhesive) Applications:
indoor and outdoor areas on machines, vehicles, inventory, warehouse and workshop equipment, walls
decorated, beams and many more.
Length: 1.00 m each

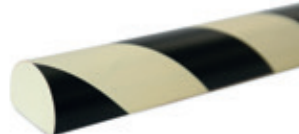
Profile 1 Semicircle

Material: Polyurethane foam
Farbe: photolum. /black
For flat mounting on walls and shelves.
Length: 100 cm, Width: 4 cm, Height: 3,2 cm
Klebefläche - Width 3,5 cm

Order-No. 90.9336



53,95 /pc.



Profil 2 Three-quarters round

Material: Polyurethane foam
Farbe: photolum. /black
Self-adhesive, for mounting on corners.
Length: 100 cm, Width: 4 cm, Height: 4 cm
Cutout - 2.5 x 2.5 cm

Order-No. 90.9337



51,40 /pc.



Profil 3 Round with cutout

Material: Polyurethane foam
Farbe: photolum. /black
Not self-adhesive, for attaching
Length: 100 cm, Width: 4 cm, Height: 4 cm
U-cutout: Depth 2 cm, Width: 0.8 cm

Order-No. 90.9338



51,40 /pc.



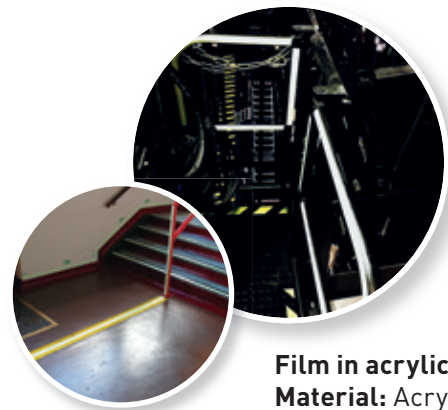


Marking as rollware

Also ideal for handrail marking.



Film in acrylic compound			
Material: Acrylic compound, Class C, self-adhesive, not for walking on, tamper-resistant. Film in acrylic compound. Ideal for permanent marking. Phosphorescent coated. Non walkable. Not non-destructive removeable.			
Width: 2,5 cm, Length: 25 m	Order-No. 60.US7401	78,95 /pc.	
Width: 5 cm, Length: 25 m	Order-No. 60.US7403	140,60 /pc.	
Width: 10 cm, Length: 25 m	Order-No. 60.US4986	232,50 /pc.	



Film in acrylic compound surface laminate			
Material: Acrylic compound, Class C. Ideal for permanent marking. Phosphorescent coated. Walkable and conditionally drivable.			
Width: 5 cm, Length: 25 m	Order-No. 60.US7403L	185,60 /pc.	



Film in acrylic compound on magnetic roll			
Material: Acrylic compound, Class C. Ideal for temporary marking. Phosphorescent coated. Non walkable.			
Width: 2,5 cm, Length: 5 m	Order-No. 60.US7401M	53,00 /pc.	

Marking strips

Anti-Slip stripe "SafetyWalk"			
SafetyWalk Anti-Slip stripe self-adhesive, C quality photoluminescent and day light fluorescent all over and black shaded Anti-slip surface R11			
Width: 3 cm, Length: 80 cm	all over	Order-No. 15.7501	20,65 /pc.
Width: 5 cm, Length: 80 cm	all over	Order-No. 15.7504	30,35 /pc.
Width: 3 cm, Length: 80 cm	black shaded	Order-No. 15.7507	18,50 /pc.
Width: 5 cm, Length: 80 cm	black shaded	Order-No. 15.7510	26,60 /pc.

SafetyWalk-strips are also available in our C-quality on page 26.



Warning stripe / directional arrow photoluminescent/green			
Material: Alu HI 150, 0.2 mm, self-adhesive. Arrows: photoluminescent/green			
Width: 3 cm, Length: 1 m		Order-No. 15.7391	16,40 /pc.
Width: 6 cm, Length: 1 m		Order-No. 15.7392	28,20 /pc.



Warning stripe photoluminescent/black			
Material: Alu HI 150, 0.2 mm, self-adhesive. Arrows: photoluminescent/black			
Width: 1,5 cm, Length: 1 m	right	Order-No. 15.7372	9,90 /pc.
	left	Order-No. 15.7373	9,90 /pc.
Width: 3,0 cm, Length: 1 m	right	Order-No. 15.7374	16,40 /pc.
	left	Order-No. 15.7375	16,40 /pc.
Width: 6,0 cm, Length: 1 m	right	Order-No. 15.7376	29,30 /pc.
	left	Order-No. 15.7377	29,30 /pc.



Warning stripe photoluminescent/red			
Material: Alu HI 150, 0.2 mm, self-adhesive. Arrows: photoluminescent/red			
Width: 1,5 cm, Length: 1 m	right	Order-No. 15.7381	9,90 /pc.
	left	Order-No. 15.7382	9,90 /pc.
Width: 3,0 cm, Length: 1 m	right	Order-No. 15.7383	16,40 /pc.
	left	Order-No. 15.7384	16,40 /pc.
Width: 6,0 cm, Length: 1 m	right	Order-No. 15.7385	29,30 /pc.
	left	Order-No. 15.7386	29,30 /pc.



EverGlow® C 150

C means Colour and 150 corresponds to the proven HI 150 quality 150 mcd/m² after 10 minutes with a decay time of 35 hours.



EverGlow® C-products combine signalcolour + visibility in the dark.



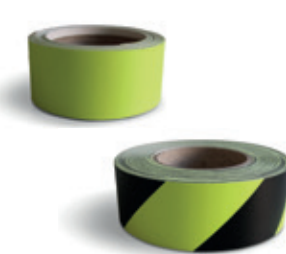
Warning profile - C Material: Alu C150, 0.56 mm Warning profile angled at 90 °, each side 3 cm warning marking, incl. ceramic coating. EverGlow® warning profile is excellently suited for marking edges, corners and obstacles. Daylight fluorescent/black shaded				
Width: 7,5 cm, Length: 1 m	Order-No. C15.7370	from 1	from 10	from 25
		28,55	25,75	22,80



Marking stripes - C Material: Alu C150, 0.2 mm Daylight fluorescent/black shaded visible during the day and at night.				
Width: 5,0 cm, Length: 1 m	Order-No. C15.4994	from 1	from 10	
Width: 7,5 cm, Length: 1 m	Order-No. C15.4995	31,70	30,90	
Width: 10 cm, Length: 1 m	Order-No. C15.4996	46,50	45,42	
		61,55	60,05	



Anti-Slip stripe "SafetyWalk" Material: Alu C150, 0.2 mm SafetyWalk Anti-Slip stripe self-adhesive, C quality photoluminescent and day light fluorescent all over and black shaded. Anti-slip surface R11				
all over - Width: 3 cm, Length: 80 cm	Order-No. C15.7501		26,50 /pc.	
all over - Width: 5 cm, Length: 80 cm	Order-No. C15.7504		41,20 /pc.	
black shaded - Width: 3 cm, Length: 80 cm	Order-No. C15.7507		22,70 /pc.	
black shaded - Width: 5 cm, Length: 80 cm	Order-No. C15.7510		32,00 /pc.	



Warning rolls - C Material: PVC Film C150, self-adhesive, C quality photoluminescent and daylight fluorescent all over and black shaded. Non walkable.				
all over				
Width: 5 cm, Length: 10 m	Order-No. C38.4987		113,55 /pc.	
black shaded left				
Width: 5 cm, Length: 25 m	Order-No. C38.4990L		244,40 /pc.	
black shaded right				
Width: 5 cm, Length: 25 m	Order-No. C38.4990R		244,40 /pc.	



Triangular warning sign - C Material: Alu C150/ Film C150. Blank phosphorescent and daylight fluorescent. We also manufacture your customized warning sign! Price on request.				
Width: 20 cm	Alu C150	Order-No. 15.0252	26,35 /pc.	
Width: 20 cm	Film C150	Order-No. 38.0252	22,40 /pc.	

Marking tapes

Warning tape black Material: Film HI 150 Phosphorescent/black, self-adhesive.				
right - width: 3 cm, Length: 25 m	Order-No. 38.7408	114,10 /pc.		
left - width: 3 cm, Length: 25 m	Order-No. 38.7409	114,10 /pc.		
right - width: 6 cm, Length: 25 m	Order-No. 38.7414	200,95 /pc.		
left - width: 6 cm, Length: 25 m	Order-No. 38.7415	200,95 /pc.		



Warning tape red Material: Film HI 150 Phosphorescent/red, self-adhesive.				
right - width: 3 cm, Length: 25 m	Order-No. 38.7428	114,10 /pc.		
left - width: 3 cm, Length: 25 m	Order-No. 38.7429	114,10 /pc.		
right - width: 6 cm, Length: 25 m	Order-No. 38.7434	200,95 /pc.		
left - width: 6 cm, Length: 25 m	Order-No. 38.7435	200,95 /pc.		



Marking tape / escape route symbol Material: Film HI 150 green/phosphorescent, self-adhesive.				
right - width: 4 cm, Length: 20 m	Order-No. 38.7458	270,70 /pc.		
left- width: 4 cm, Length: 20 m	Order-No. 38.7459	270,70 /pc.		



Marking tape / with chevrons Material: Film HI 150 green/phosphorescent, self-adhesive.				
Width: 3 cm, Length: 25 m	Order-No. 38.7441	124,90 /pc.		
Width: 6 cm, Length: 25 m	Order-No. 38.7443	183,75 /pc.		



Best colour systems - meeting highest demands



Phosphorescent coating systems

Coating systems should be used for escape route marking if a hazard due to smoke development cannot be excluded and increased abrasion resistance is required.

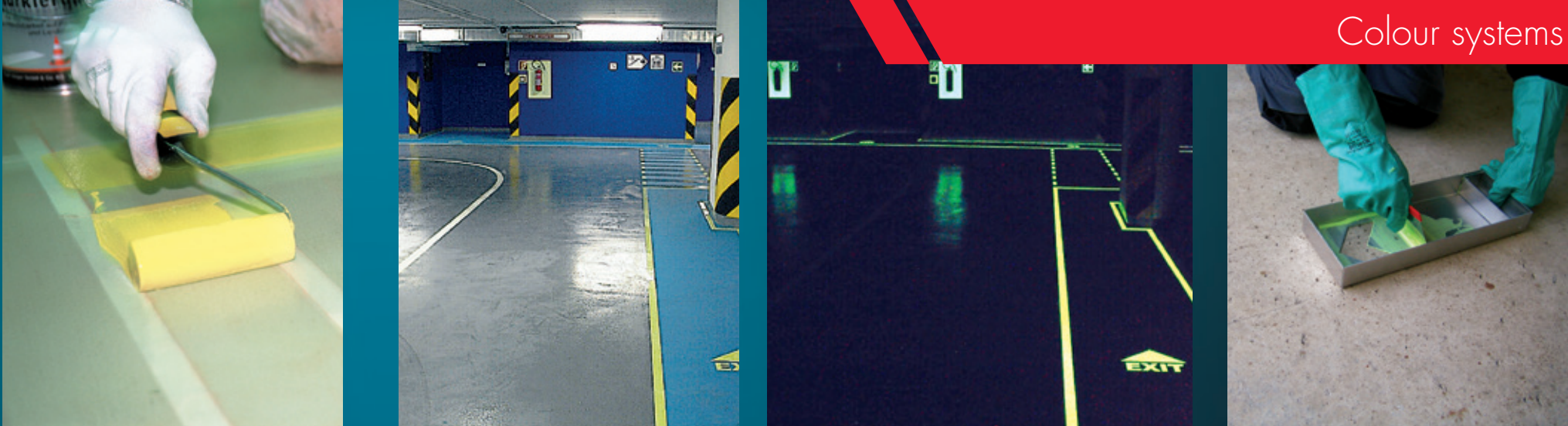


Colour systems

Coating systems

For marking lines, ground markings or surfaces.

For the biggest planning security
we recommend F200/300 or G200.



2-component system F

For marking surfaces

System F is a solvent-free 2-component epoxy resin system which is recommended for surface marking and lines. In order to increase the shelf life, the luminescent pigment is supplied in a separate container. The material can be roll-coated or flat-coated. We recommend a white primer for utmost luminance. The average drying time amounts to about 8 h.



System F for guidance lines



F 150		
***Luminance: after 10 min: 150 mcd/m², after 60 min: 20 mcd/m², consumption: apr. 1000 g/m²		
1,0 kg-Set	Order-No. 90.3033/1	117,80 /kg
2,5 kg-Set	Order-No. 90.3033/2,5	114,20 /kg
5,0 kg-Set	Order-No. 90.3033/5	109,45 /kg

F 200		
**Luminance: after 10 min: 200 mcd/m², after 60 min: 28 mcd/m², consumption: apr. 1000 g/m²		
1,0 kg-Set	Order-No. 90.7667/1	135,00 /kg
2,5 kg-Set	Order-No. 90.7667/2,5	129,80 /kg
5,0 kg-Set	Order-No. 90.7667/5	125,40 /kg

F 300		
**Luminance: after 10 min: 300 mcd/m², after 60 min: 35 mcd/m², consumption: apr. 1000 g/m²		
1,0 kg-Set	Order-No. 90.3034/1	151,30 /kg
2,5kg-Set	Order-No. 90.3034/2,5	145,45 /kg
5,0 kg-Set	Order-No. 90.3034/5	139,70 /kg



Reflex white EPOXY		
Consumption: approx. 250 g/m²		
1,0 kg-Set	Order-No. 90.7665/1	55,45 /kg
2,5 kg-Set	Order-No. 90.7665/2,5	52,90 /kg
5,0 kg-Set	Order-No. 90.7665/5	51,50 /kg

Thinner / Cleaner		
0,5 Liter	Order-No. 90.3035	18,05

**Measured regarding DIN 67510 on white underground with 1,5 mm application strength.

2-component system G

For spotty marking

System G is a solvent-free 2-component epoxy resin system which is recommended for selective markings using arrows or points. It is applied by means of a spatula and stencil. 3 arrows per meter (max. distance 35 cm) are recommended as continuous guidance marking. In order to increase the shelf life, the luminescent pigment is supplied in a separate container. The average drying time amounts to about 8 h. 40-60 arrows can be applied with 1 kg.

System G for spotty marking

G 150		
**Luminance: after 10 min: 150 mcd/m², after 20 min: 28 mcd/m², consumption: apr. 1000 g/m²		
1,0 kg-Set	Order-No. 90.3036/1	117,80 /kg
2,5 kg-Set	Order-No. 90.3036/2,5	114,20 /kg
5,0 kg-Set	Order-No. 90.3036/5	109,45 /kg

G 200		
**Luminance: after 10 min: 200 mcd/m², after 20 min: 28 mcd/m², consumption: apr. 1000 g/m²		
1,0 kg-Set	Order-No. 90.7669/1	135,00 /kg
2,5 kg-Set	Order-No. 90.7669/2,5	129,80 /kg
5,0 kg-Set	Order-No. 90.7669/5	125,40 /kg

Reflex white EXPOXY		
Consumption: approx. 250 g/m²		
1,0 kg-Set	Order-No. 90.7665/1	55,45 /kg
2,5 kg-Set	Order-No. 90.7665/2,5	52,90 /kg
5,0 kg-Set	Order-No. 90.7665/5	51,50 /kg

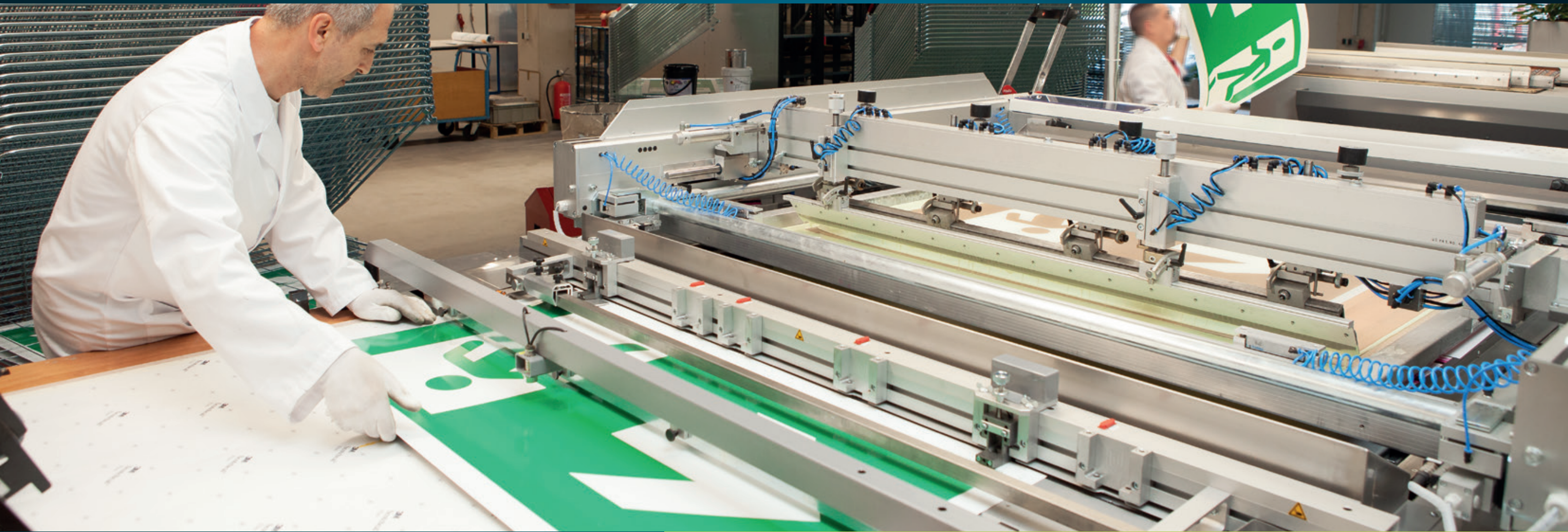
Thinner / Cleaner		
0,5 Liter	Order-No. 90.3035	18,05

Aluminum stencil
Aluminum stencils are perfectly suitable for photoluminescent floor markings. The low weight and recessed grip permit quick and clean working. Note: Other designs and sizes available on request. The aluminum stencils are easy to clean, e.g. by using the thinner 90.3035.

Weight: 350 g				
Length: 35 cm, Width: 13 cm, Height: 4 cm				
Measurement arrow: Lenght: 9cm, Width: 9,5 cm				
	from 1	from 10	from 25	
Order-No. 90.3038	53,20	49,35	46,55	



Manufacturing - with highest quality



EverGlow® THE ORIGINAL

Production regarding DIN EN ISO 9001
Environmental certifications regarding DIN EN ISO 14001
On highest technical level



General information

Our recommendation

Always mark according to the most recent standards and directives to meet legal requirements.
Always use the same symbol signs within one property for marking purposes.

Using different symbol signs for one safety means may result in confusion and irritation and thus consequences which cannot be assessed.

Pricetable
for all marking products on this page.

Film signs				
Size	from 1	from 10	from 25	from 50
30 x 15 cm	10,30	9,60	8,90	7,70
40 x 20 cm	16,80	14,95	14,25	12,75
Aluminum signs				
Size	from 1	from 10	from 25	from 50
30 x 15 cm	12,65	11,10	10,35	10,25
40 x 20 cm	19,05	17,20	16,20	15,55
60 x 30 cm	48,35	46,20	43,65	41,30

On request:
• Markings in frame.
• Other sizes and shapes as well as front cover made of acrylic glass.
Refer to Page 47



Escape route, Emergency exit up and to the left (combination sign)		
ISO 7010 E001 + directional arrow		
Film	30 x 15 cm	Order-No. 38.3025 OL
	40 x 20 cm	Order-No. 38.3026 OL
Alu	30 x 15 cm	Order-No. 15.3025 OL
	40 x 20 cm	Order-No. 15.3026 OL
XL	120 x 60 cm	Order-No. 15.3031 OL



Escape route, Emergency exit up and to the right (combination sign)		
ISO 7010 E002 + directional arrow		
Film	30 x 15 cm	Order-No. 38.3023 OL
	40 x 20 cm	Order-No. 38.3024 OL
Alu	30 x 15 cm	Order-No. 15.3023 OL
	40 x 20 cm	Order-No. 15.3024 OL



Escape route, Emergency exit left, angular upwards (combination sign)		
ISO 7010 E001 + directional arrow		
Film	30 x 15 cm	Order-No. 38.3048 OL
	40 x 20 cm	Order-No. 38.3049 OL
Alu	30 x 15 cm	Order-No. 15.3048 OL
	40 x 20 cm	Order-No. 15.3049 OL



Escape route down and to the left (combination sign)		
ISO 7010 E001 + directional arrow		
Film	30 x 15 cm	Order-No. 38.0084 OL
	40 x 20 cm	Order-No. 38.0085 OL
Alu	30 x 15 cm	Order-No. 15.0084 OL
	40 x 20 cm	Order-No. 15.0085 OL
	60 x 30 cm	Order-No. 15.3028 OL
XL	120 x 60 cm	Order-No. 15.3032 OL



Escape route down and to the right (combination sign)		
ISO 7010 E002 + directional arrow		
Film	30 x 15 cm	Order-No. 38.0069 OL
	40 x 20 cm	Order-No. 38.0079 OL
Alu	30 x 15 cm	Order-No. 15.0069 OL
	40 x 20 cm	Order-No. 15.0079 OL
	60 x 30 cm	Order-No. 15.3027 OL



Escape route, Emergency exit left, angular downwards (combination sign)		
ISO 7010 E001 + directional arrow		
Film	30 x 15 cm	Order-No. 38.3044 OL
	40 x 20 cm	Order-No. 38.3045 OL
Alu	30 x 15 cm	Order-No. 15.3044 OL
	40 x 20 cm	Order-No. 15.3045 OL



Escape route, Emergency exit, left (combination sign)		
ISO 7010 E001 + directional arrow		
Film	30 x 15 cm	Order-No. 38.0088 OL
	40 x 20 cm	Order-No. 38.0089 OL
Alu	30 x 15 cm	Order-No. 15.0088 OL
	40 x 20 cm	Order-No. 15.0089 OL
	60 x 30 cm	Order-No. 15.3030 OL
XL	120 x 60 cm	Order-No. 15.3033 OL



Escape route, Emergency exit, right (combination sign)		
ISO 7010 E002 + directional arrow		
Film	30 x 15 cm	Order-No. 38.0086 OL
	40 x 20 cm	Order-No. 38.0087 OL
Alu	30 x 15 cm	Order-No. 15.0086 OL
	40 x 20 cm	Order-No. 15.0087 OL
	60 x 30 cm	Order-No. 15.3029 OL
XL	120 x 60 cm	Order-No. 15.3034 OL



Escape route, Emergency exit right, angular downwards (combination sign)		
ISO 7010 E002 + directional arrow		
Film	30 x 15 cm	Order-No. 38.3042 OL
	40 x 20 cm	Order-No. 38.3043 OL
Alu	30 x 15 cm	Order-No. 15.3042 OL
	40 x 20 cm	Order-No. 15.3043 OL



Escape route right, angular upwards (combination sign)		
ISO 7010 E002 + directional arrow		
Film	30 x 15 cm	Order-No. 38.3046 OL
	40 x 20 cm	Order-No. 38.3047 OL
Alu	30 x 15 cm	Order-No. 15.3046 OL
	40 x 20 cm	Order-No. 15.3047 OL

Simply order in
our onlineshop
www.shop.everglow.de

Escape signs

Regarding ISO 7010



The signs give the advantage to show all possibilities of the escape route with four symbols. The directional arrows are only to be used in connection with the Emergency Exit Escape Signs. Frames for the marking signs can be found on page 47.



Emergency exit right
ISO 7010-E002

Film	15 x 15 cm	Order-No. 38.0029
	20 x 20 cm	Order-No. 38.0030
Alu	15 x 15 cm	Order-No. 15.0029
	20 x 20 cm	Order-No. 15.0030



Directional arrow left / right
ISO 3864 Typ D

Film	15 x 15 cm	Order-No. 38.0055-7010
	20 x 20 cm	Order-No. 38.0056-7010
Alu	15 x 15 cm	Order-No. 15.0055-7010
	20 x 20 cm	Order-No. 15.0056-7010



Emergency exit left
ISO 7010-E001

Film	15 x 15 cm	Order-No. 38.0031
	20 x 20 cm	Order-No. 38.0032
Alu	15 x 15 cm	Order-No. 15.0031
	20 x 20 cm	Order-No. 15.0032



Directional arrow angular
ISO 3864 Typ D

Film	15 x 15 cm	Order-No. 38.0090-7010
	20 x 20 cm	Order-No. 38.0091-7010
Alu	15 x 15 cm	Order-No. 15.0090-7010
	20 x 20 cm	Order-No. 15.0091-7010

Application examples



Assembly point
ISO 7010-E007

Aluminum sign
with surface sealing for outdoor usage.

Film	40 x 40 cm	Order-No. 38.A2010	31,40
Alu	40 x 40 cm	Order-No. 15.A2010	41,15
	60 x 60 cm	Order-No. 15.A2015	63,10



Escape ladder
ISO 7010-E059

Film	20 x 20 cm	Order-No. 38.0093
Alu	20 x 20 cm	Order-No. 15.0093

Pricetable

for all marking products on this double page.

Film signs				
Size	from 1	from 10	from 25	from 50
10 x 10 cm	4,60	4,25	3,90	3,60
15 x 15 cm	5,75	5,55	5,20	4,90
20 x 20 cm	7,80	7,40	6,95	5,75
30 x 30 cm	18,30	17,30	16,10	13,65

Aluminum signs				
Size	from 1	from 10	from 25	from 50
15 x 15 cm	8,45	7,45	6,80	6,40
20 x 20 cm	9,60	8,55	7,95	7,60
30 x 30 cm	21,50	19,05	17,60	16,10



First aid facilities should be marked as such as well as the repositories of first-aid equipment. The necessary rescue signs made from photoluminescent materials (e.g. photoluminescent emergency signs) must be used on escape routes unless there is emergency lighting available in the workplace. The safety objective is to provide the recognition of rescue signs in case of failure with general lighting.



Public life saving equipment
DIN 4844-2 WSE001

Film	20 x 20 cm	Order-No. 38.A3065
Alu	20 x 20 cm	Order-No. 15.A3065



Emergency exit device break to obtain access
ISO 7010-E008

Film	10 x 10 cm	Order-No. 38.A2060
-------------	------------	--------------------



Doctor
ISO 7010-E009

Film	15 x 15 cm	Order-No. 38.0065-7010
	20 x 20 cm	Order-No. 38.0066-7010
Alu	15 x 15 cm	Order-No. 15.0065-7010
	20 x 20 cm	Order-No. 15.0066-7010



First aid
ISO 7010-E003

Film	15 x 15 cm	Order-No. 38.0057
	20 x 20 cm	Order-No. 38.0058
	30 x 30 cm	Order-No. 38.0078
Alu	15 x 15 cm	Order-No. 15.0057
	20 x 20 cm	Order-No. 15.0058
	30 x 30 cm	Order-No. 15.0078



Emergency telephone
ISO 7010-E004

Film	15 x 15 cm	Order-No. 38.0067
	20 x 20 cm	Order-No. 38.0068
Alu	15 x 15 cm	Order-No. 15.0067
	20 x 20 cm	Order-No. 15.0068



Emergency showers
ISO 7010-E012

Film	15 x 15 cm	Order-No. 38.0061
	20 x 20 cm	Order-No. 38.0062
Alu	15 x 15 cm	Order-No. 15.0061
	20 x 20 cm	Order-No. 15.0062



Automated external defibrillator (AED)
ISO 7010-E010

Film	15 x 15 cm	Order-No. 38.0167
	20 x 20 cm	Order-No. 38.0155
Alu	20 x 20 cm	Order-No. 15.0155



Medical stretcher
ISO 7010-E013

Film	15 x 15 cm	Order-No. 38.0059
	20 x 20 cm	Order-No. 38.0060
Alu	15 x 15 cm	Order-No. 15.0059
	20 x 20 cm	Order-No. 15.0060



Eye rinse equipment
ISO 7010-E011

Film	15 x 15 cm	Order-No. 38.0063
	20 x 20 cm	Order-No. 38.0064
Alu	15 x 15 cm	Order-No. 15.0063
	20 x 20 cm	Order-No. 15.0064

UL 924 listed Exit signs and Signs from operational practise

Luminance class C or E



Pricetable for all marking products on this double page.

Film signs				
Size	from 1	from 10	from 25	from 50
15 x 15 cm	5,75	5,55	5,20	4,90
20 x 20 cm	7,80	7,40	6,95	6,20
30 x 10,5 cm	8,45	7,45	6,80	6,40

Aluminum signs				
Size	from 1	from 10	from 25	from 50
15 x 15 cm	8,45	7,45	6,80	6,40
20 x 20 cm	9,60	8,55	7,95	7,60
30 x 10,5 cm	12,65	11,10	10,35	10,25
40 x 14 cm	15,55	14,70	13,25	12,75



UL 924 listed EXIT signs; 75 ft rating
EXIT signs are supplied with 2 self-adhesive chevrons for directional indication.



Exit sign green
Luminance class E *
Alu 35.7 x 21.7 cm Order-No. 90.8924G
Price on request



Exit sign red
Luminance class E *
Alu 35.7 x 21.7 cm Order-No. 90.8924R
Price on request



Exit sign black
Luminance class E *
Alu 35.7 x 21.7 cm Order-No. 90.8924B
Price on request

Adhesive pads
1 set = 4 pads
Order-No. 90.9129 0,85



Signs from operational practise



Exit
Film 30 x 10,5 cm Order-No. 38.0126
Alu 30 x 10,5 cm Order-No. 15.0126
40 x 14 cm Order-No. 15.0127



Directional Arrow
Film 30 x 10,5 cm Order-No. 38.0105
Alu 30 x 10,5 cm Order-No. 15.0105
40 x 14 cm Order-No. 15.0106



Exit for wheel chair user right
Alu 20 x 20 cm Order-No. 15.A2065



Exit for wheel chair user left
Alu 20 x 20 cm Order-No. 15.A2070



House alarm
Film 15 x 15 cm Order-No. 38.A5200
Alu 15 x 15 cm Order-No. 15.A5201



Emergency exit with escape ladder, left
ISO 7010-E016 left
Finish: printed or laminated
Film 20 x 20 cm Order-No. 38.3020
Alu 20 x 20 cm Order-No. 15.3020



Emergency exit with escape ladder, right
ISO 7010-E016 right
Finish: printed or laminated
Film 20 x 20 cm Order-No. 38.3021
Alu 20 x 20 cm Order-No. 15.3021



Escape Hatch
DIN 4844-2 DE019
Finish: printed or laminated
Film 15 x 15 cm Order-No. 38.A2030
20 x 20 cm Order-No. 38.A2035
Alu 20 x 20 cm Order-No. 15.A2035



Emergency exit with access to fire ladder
ISO 7010-E017
Film 20 x 20 cm Order-No. 38.0037-2
Alu 20 x 20 cm Order-No. 15.0037-2



Open by turning clockwise
ISO 7010-E019
Film 10 x 10 cm Order-No. 38.A2055



Open by turning counterwise
ISO 7010-E018
Film 10 x 10 cm Order-No. 38.A2050

Storey marking

The perfect complement to the route signage for doors and staircases.



*Please provide the six-digit order number as well as your desired number(s) or letter(s).

For example: 38.3022-1 or 38.3002-A
Finish: screen or digital printing, optionally laminated

Digits - Letters
Film 15 x 15 cm Order-No. 38.3022*
Alu 15 x 15 cm Order-No. 15.3022*



* Signs will be supplied with 2 self-adhesive film chevrons for directional indications.

Fire safety signs

Good visibility

The required fire safety symbols in escape routes shall be in photoluminescent design (e.g. photoluminescent fire safety signs) insofar as a safety lighting is missing at the workplace. This serves visibility of the fire safety signs if the general lighting fails.

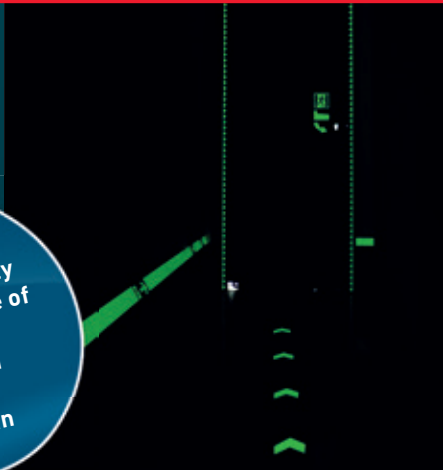


EverGlow® TL

Triple Loading

Ideal for areas with poor lighting or short activation periods. To be preferred for activation by LED.

For maximum planning security with a luminance of 300 mcd/m² after 10 min 45 mcd/m² after 60 min



Our recommendation

Mark always according to the latest regulations and standards in order to meet the legal requirements. Within a building, mark always with the same symbol signs. The use of different symbol signs for one and the same security statement can lead to confusion and irritation with unknown consequences.



Fire extinguisher
ISO 7010-F001

Film	10 x 10 cm	Order-No. 38.A5005
	15 x 15 cm	Order-No. 38.7694
Alu	20 x 20 cm	Order-No. 38.7695
	30 x 30 cm	Order-No. 38.A5020
Alu	15 x 15 cm	Order-No. 15.7694
	20 x 20 cm	Order-No. 15.7695
	30 x 30 cm	Order-No. 15.A5020
	45 x 45 cm	Order-No. 15.A5025



Collection of firefighting equipment
ISO 7010-F004

Film	15 x 15 cm	Order-No. 38.7690
	20 x 20 cm	Order-No. 38.7691
Alu	15 x 15 cm	Order-No. 15.7690
	20 x 20 cm	Order-No. 15.7691



Fire emergency telephone
ISO 7010-F006

Film	15 x 15 cm	Order-No. 38.US2715
	20 x 20 cm	Order-No. 38.US2716
Alu	15 x 15 cm	Order-No. 15.US2715
	20 x 20 cm	Order-No. 15.US2716



Fire hose reel
ISO 7010-F002

Film	15 x 15 cm	Order-No. 38.7692
	20 x 20 cm	Order-No. 38.7693
	30 x 30 cm	Order-No. 38.7697
Alu	15 x 15 cm	Order-No. 15.7692
	20 x 20 cm	Order-No. 15.7693
	30 x 30 cm	Order-No. 15.7697



Fire ladder
ISO 7010-F003

Film	15 x 15 cm	Order-No. 38.US2712
	20 x 20 cm	Order-No. 38.US2713
Alu	15 x 15 cm	Order-No. 15.US2712
	20 x 20 cm	Order-No. 15.US2713



Fire alarm call point
ISO 7010-F005

Film	15 x 15 cm	Order-No. 38.US2731
	20 x 20 cm	Order-No. 38.US2732
Alu	15 x 15 cm	Order-No. 15.US2731
	20 x 20 cm	Order-No. 15.US2732



Fire blanket
ISO 7010-F016

Film	15 x 15 cm	Order-No. 38.7010F016-15
	20 x 20 cm	Order-No. 38.7010F016-20
Alu	15 x 15 cm	Order-No. 15.7010F016-15
	20 x 20 cm	Order-No. 15.7010F016-20



Mobile Fire Extinguisher
ISO 7010-F001

Film	20 x 20 cm	Order-No. 38.7698
------	------------	-------------------



Emergency exit left, ahead/upwards
(combination sign)

ASR A1.3 E001+directional arrow		
Alu 0,56	40 x 20 cm	Order-No. TL17.3026



Emergency exit left, arrow left
(combination sign)

ASR A1.3 E001+directional arrow		
Alu 0,56	40 x 20 cm	Order-No. TL17.0089



Emergency exit left, arrow downwards
(combination sign)

ASR A1.3 E001+directional arrow		
Alu 0,56	40 x 20 cm	Order-No. TL17.0085



Fire extinguisher

ASR A1.3 F001 ISO 7010-F001		
Alu 0,56	20 x 20 cm	Order-No. TL17.7695



Emergency exit right, ahead/upwards
(combination sign)

ASR A1.3 E002+directional arrow		
Alu 0,56	40 x 20 cm	Order-No. TL17.3024



Emergency exit right, arrow right
(combination sign)

ASR A1.3 E002+directional arrow		
Alu 0,56	40 x 20 cm	Order-No. TL17.0087



Emergency exit right, arrow downwards
(combination sign)

ASR A1.3 E002+directional arrow		
Alu 0,56	40 x 20 cm	Order-No. TL17.0079



Fire hose

ASR A1.3 F002 ISO 7010-F002		
Alu 0,56	20 x 20 cm	Order-No. TL17.7693



Flag and angled signs

Visible from all sites

Our angled and flag signs are made of aluminum and printed photoluminescent or concealed.



Flag and angled signs

Table of prices
for all items on this page.

Aluminum signs				
Size	from 1	from 10	from 25	from 50
15 x 15 cm	18,00	17,00	15,80	14,85
20 x 20 cm	21,50	19,90	19,00	18,10
30 x 30 cm	36,00	33,95	32,75	

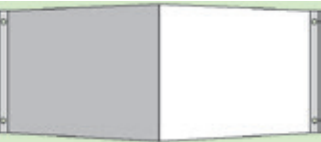
Angled and Flag Signs – One Price!
Two designs – one price scale!



Design your own flag and angled signs

The blank angled and flag signs can be covered with self-adhesive EverGlow® film signs of your choice.

Please also indicate the order number of the respective film sign in your order. The prices of the blank angled/flag signs are exclusive of film signs. On request, we deliver completely covered angled/flag signs according to your specifications.



Rectangular flag sign for wall mounting

Material: Aluminium
Width: 30 cm, Height: 15 cm
Mounting measurements: Width: 46 cm, Height: 15 cm, Depth: 20,5 cm
Order-No. 51.9550 17,00 /pc.

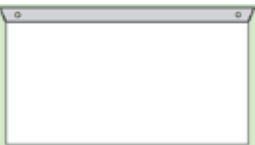
Width: 40 cm, Height: 20 cm
Mounting measurements: Width: 59,5 cm, Height: 20 cm, Depth: 28 cm
Order-No. 51.9551 24,70 /pc.



Rectangular flag sign for wall mounting

Material: Aluminium
Width: 30 cm, Height: 15 cm
Mounting measurements: Width: 2,2 cm, Height: 15 cm, Depth: 30,5 cm
Order-No. 51.9560 14,70 /pc.

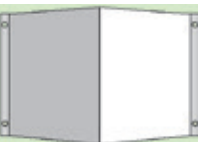
Width: 40 cm, Height: 20 cm
Mounting measurements: Width: 2,2 cm, Height: 20 cm, Depth: 40,5 cm
Order-No. 51.9561 21,95 /pc.



Rectangular flag sign for ceiling mounting

Material: Aluminium
Width: 30 cm, Height: 15 cm
Mounting measurements: Width: 30 cm, Height: 15,5 cm, Depth: 2,2 cm
Order-No. 51.9555 14,70 /pc.

Width: 40 cm, Height: 20 cm
Mounting measurements: Width: 40 cm, Height: 20,5 cm, Depth: 2,5 cm
Order-No. 51.9556 21,95 /pc.



Square flag sign for wall mounting

Material: Aluminium
Width: 15 cm, Height: 15 cm
Mounting measurements: Width: 25,7 cm, Height: 15 cm, Depth: 10,5 cm
Order-No. 51.9552 14,70 /pc.

Width: 20 cm, Height: 20 cm
Mounting measurements: Width: 35,3 cm, Height: 20 cm, Depth: 14 cm
Order-No. 51.9553 18,40 /pc.



Square flag sign for wall mounting

Material: Aluminium
Width: 15 cm, Height: 15 cm
Mounting measurements: Width: 2,2 cm, Height: 15 cm, Depth: 15,5 cm
Order-No. 51.9557 12,60 /pc.

Width: 20 cm, Height: 20 cm
Mounting measurements: Width: 2,2 cm, Height: 20 cm, Depth: 20,5 cm
Order-No. 51.9558 14,70 /pc.



Square flag sign for ceiling mounting

Material: Aluminium
Width: 15 cm, Height: 15 cm
Mounting measurements: Width: 15 cm, Height: 15,5 cm, Depth: 2,2 cm
Order-No. 51.9563 12,60 /pc.

Width: 20 cm, Height: 20 cm
Mounting measurements: Width: 20 cm, Height: 20,5 cm, Depth: 2,5 cm
Order-No. 51.9564 14,70 /pc.



First aid

Flag - ISO 7010
15 x 15 cm Order-No. 15.9212
20 x 20 cm Order-No. 15.9213

Angeled - ISO 7010
15 x 15 cm Order-No. 15.9202
20 x 20 cm Order-No. 15.9203



Krankentrage

Flag - ISO 7010
15 x 15 cm Order-No. 15.9507
20 x 20 cm Order-No. 15.9508

Angeled - ASR A1.3 E004
15 x 15 cm Order-No. 15.9505
20 x 20 cm Order-No. 15.9506



Fire extinguisher

Flag - ISO 7010-F001
15 x 15 cm Order-No. 15.A5035
20 x 20 cm Order-No. 15.A5036
30 x 30 cm Order-No. 15.A5037

Angeled - ISO 7010-F001
15 x 15 cm Order-No. 15.A5030
20 x 20 cm Order-No. 15.A5031
30 x 30 cm Order-No. 15.A5032



Automat. ext. defibrillator (AED)

Flag - ISO 7010
15 x 15 cm Order-No. 15.3053
20 x 20 cm Order-No. 15.3055

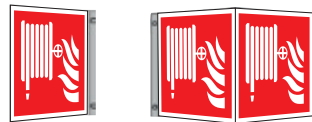
Angeled - ISO 7010
15 x 15 cm Order-No. 15.3052
20 x 20 cm Order-No. 15.3054



Notruftelefon

Flag - ISO 7010
15 x 15 cm Order-No. 15.9523
20 x 20 cm Order-No. 15.9524

Angeled - ASR A1.3 E007
15 x 15 cm Order-No. 15.9521
20 x 20 cm Order-No. 15.9522



Fire hose reel

Flag - ISO 7010-F002
15 x 15 cm Order-No. 15.A5141
20 x 20 cm Order-No. 15.A5146

Angeled - ISO 7010-F002
15 x 15 cm Order-No. 15.A5140
20 x 20 cm Order-No. 15.A5145



Eye rinse equipment

Flag - ISO 7010
15 x 15 cm Order-No. 15.9515
20 x 20 cm Order-No. 15.9516

Angeled - ISO 7010
15 x 15 cm Order-No. 15.9513
20 x 20 cm Order-No. 15.9514



Fire alarm call point

Flag - ISO 7010-F005
15 x 15 cm Order-No. 15.A5157
20 x 20 cm Order-No. 15.A5159

Angeled - ISO 7010-F005
15 x 15 cm Order-No. 15.A5156
20 x 20 cm Order-No. 15.A5158



Collection of firefighting equipment

Flag - ISO 7010-F004
15x15 cm Order-No. 15.A5196
20x20 cm Order-No. 15.A5198

Angeled - ISO 7010-F004
15 x 15 cm Order-No. 15.A5195
20 x 20 cm Order-No. 15.A5197

New safety markings

Regarding DIN EN ISO 7010

The signs match luminance class C.

Accessoires

New safety markings



Provisional assembly point
DIN EN ISO 7010 E024
Film 20 x 20 cm Order-No. 38.A2080
7,80 /pc.



Door opens by pushing on the left
DIN EN ISO 7010 E022
Film 20 x 20 cm Order-No. 38.A2075
7,80 /pc.



Door opens by pulling on the left
DIN EN ISO 7010 E057
Film 20 x 20 cm Order-No. 38.A2087
7,80 /pc.



Rescue chair
DIN EN ISO 7010 E060
Film 20 x 20 cm Order-No. 38.A2092
7,80 /pc.



Door opens by pushing on the right
DIN EN ISO 7010 E023
Film 20 x 20 cm Order-No. 38.A2077
7,80 /pc.



Door opens by pulling on the right
DIN EN ISO 7010 E058
Film 20 x 20 cm Order-No. 38.A2090
7,80 /pc.



Sliding door opens to the right
DIN EN ISO 7010 E033
Film 20 x 20 cm Order-No. 38.A2082
7,80 /pc.



Sliding door opens to the left
DIN EN ISO 7010 E034
Film 20 x 20 cm Order-No. 38.A2085
7,80 /pc.



Emergency stop button
DIN EN ISO 7010 E020
Film 20 x 20 cm Order-No. 38.A2097
7,80 /pc.



Drinking water
DIN EN ISO 7010 E015
Film 20 x 20 cm Order-No. 38.A2095
7,80 /pc.

Appealing and sturdy

Suitable for all types of markings (photoluminescent / normal)

The sturdy frames are made of aluminum. For installation of markings in the field of escape routes, emergency exits, first aid, and fire safety. Easy insertion of signs without any tools.

Frame for safety signs

Material:	Aluminum/hard fibre, silver faint	
Width: 15,8 cm, Height: 15,8 cm	for signs 15x15cm	Order-No. 90.3043
Width: 30,8 cm, Height: 15,8 cm	for signs 30x15cm	Order-No. 90.3045
Width: 20,8 cm, Height: 20,8 cm	for signs 20x20cm	Order-No. 90.3047
Width: 40,8 cm, Height: 20,8 cm	for signs 40x20cm	Order-No. 90.3049
Anti-theft device for frames		Order-No. 90.3050
Key for anti-theft device		Order-No. 90.3051

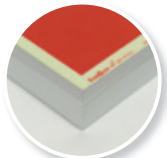
Other shapes or sizes (for example 30 x 30 cm), same as front cover made with acryl glass, on demand.
Frame colour white also possible on demand. Complete solutions are available on demand.

Cube for individual design

Material:	Aluminum white	
With 4 drilling holes for installation on the ceiling.		
Length: 40 cm, Width: 40 cm, Height: 40 cm	Order-No. 90.4997	59,50 /pc.
Length: 20 cm, Width: 20 cm, Height: 20 cm	Order-No. 90.4998	51,90 /pc.

Fittings - nodal chain

Material:	wire Strength 1,6 mm, unaudited	
Length on demand		Order-No. 90.9122
Fittings - S-hook		
Material: wire Strength 2 mm		
Set = 10 pieces	Order-No. 90.9124	5,95 /set



Phosphorescent pigments



Manifold

The phosphorescent pigments from EverGlow® can be used in the most various indoor and outdoor areas.



Phosphorescent pigments

Regarding DIN 67510, ISO 17398, ISO 16069, MED a.o.



The phosphorescent pigments are in accordance with DIN 67510 standards and can be used safely without harming human health.

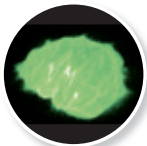
Coloured phosphorecent pigments from EverGlow®

The phosphorecent pigments have numerous indoor and outdoor uses. For example, for decoration, creating effects, stage marking or as a raw material for phosphorescent inks.

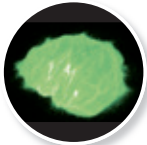
In daylight with intrinsic colour, the pigments glow in the dark (after exposure to daylight or artificial light). The duration and intensity of exposure have significant impact on the strength and duration of the afterglow. The exposure can be repeated as often as desired without the effects being reduced. The colours are generally intermixable.

In any case, it is recommended to always use a white reflective coating as a primer for luminescent colours in order to greatly enhance the luminosity

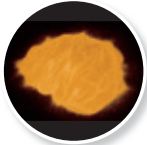
High Performance Pigments for technical applications:
For example, for use in colour systems (PU epoxy, etc.); No aqueous systems!



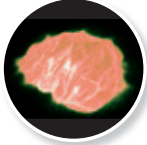
Pigment 342 green
Phosphorescent zinc sulfide pigments with blue flourescent pigments
1 kg container **Order-No. 342green** 124,75 /kg



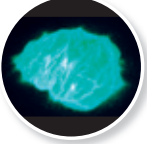
Pigment 205 yellow
Phosphorescent zinc sulfide pigments with blue flourescent pigments
1 kg Container **Order-No. 205yellow** 124,75 /kg



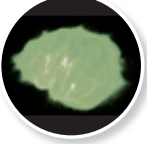
Pigment 305 orange
Phosphorescent zinc sulfide pigments with blue flourescent pigments
1 kg container **Order-No. 305orange** 124,75 /kg



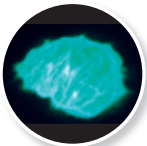
Pigment 507 pink
Phosphorescent zinc sulfide pigments with blue flourescent pigments
1 kg container **Order-No. 507pink** 124,75 /kg



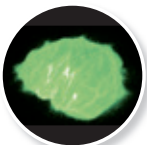
Pigment 8B blue
Phosphorescent zinc sulfide pigments with blue flourescent pigments
1 kg container **Order-No. 8Bblue** 124,75 /kg



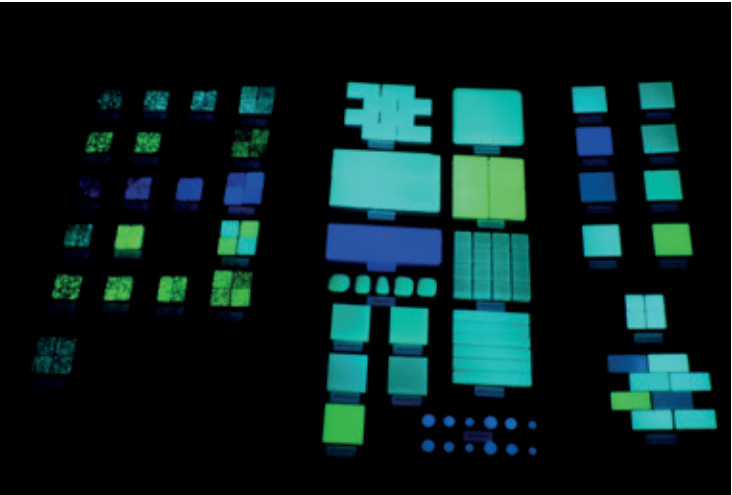
Pigment Standard Zns
Phosphorescent zinc sulfide pigments in accordance with DIN 67510 standards
1 kg container **Order-No. StandardZns** 86,60 /kg



Pigment 300M blue
Blue phosphorescent high-performance pigments
1 kg container **Order-No. 300Mblue** 340,70 /kg



Pigment GXXXB
Phosphorescent high-performance pigments in accordance with DIN 67510 standards
1 kg container **Order-No. GXXXB** 260,00 /kg



Semi-finished products

Large rolls and plate ware

Semi-finished products for further processing

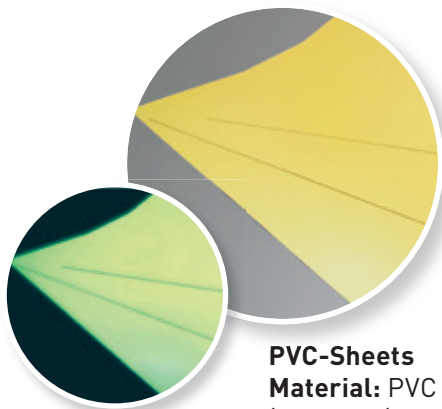


The printability of all films should be checked in advance. You are welcome to obtain a material sample for testing.

Semi-finished products

Photoluminescent films

Large spools with PVC film for being printed individually.
The films are intended for indoor use without UV radiation.



PVC-Sheets
Material: PVC rigid boards Class C, 1,4 mm (printable).
Width: 100 cm, Length: 120 cm

Order-No. 90.RB902C 72,00



PVC-Film on roll
Material: PVC Class C, phosphorescent self-adhesive, printable, non-walkable
Width: 100 cm, Length: 50 m

Order-No. 90.SAP903C 2.884,00



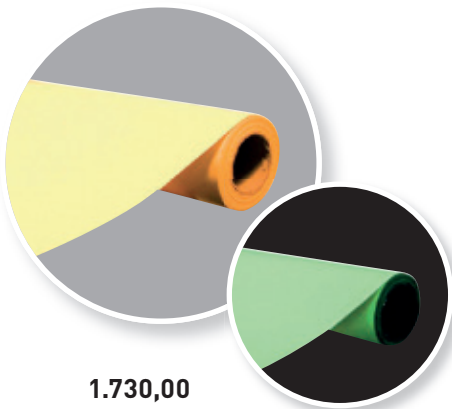
PVC-Film on roll - C
Material: PVC Class C, phosphorescent/fluorescent yellow self-adhesive, printable, non-walkable
Width: 100 cm, Length: 50 m

Order-No. C38.4000 2.935,00

[Due to changes in the procurement markets, the formats can vary]

Roll acrylic-based
Material: acrylic composite class C
Self-adhesive, non-walkable, printable
Width: 122 cm, Length: 25 m

Order-No. 90.Y901 1.730,00



With laminate for subsequently printing (no laser printing):
Width: 122 cm, Length: 25 m

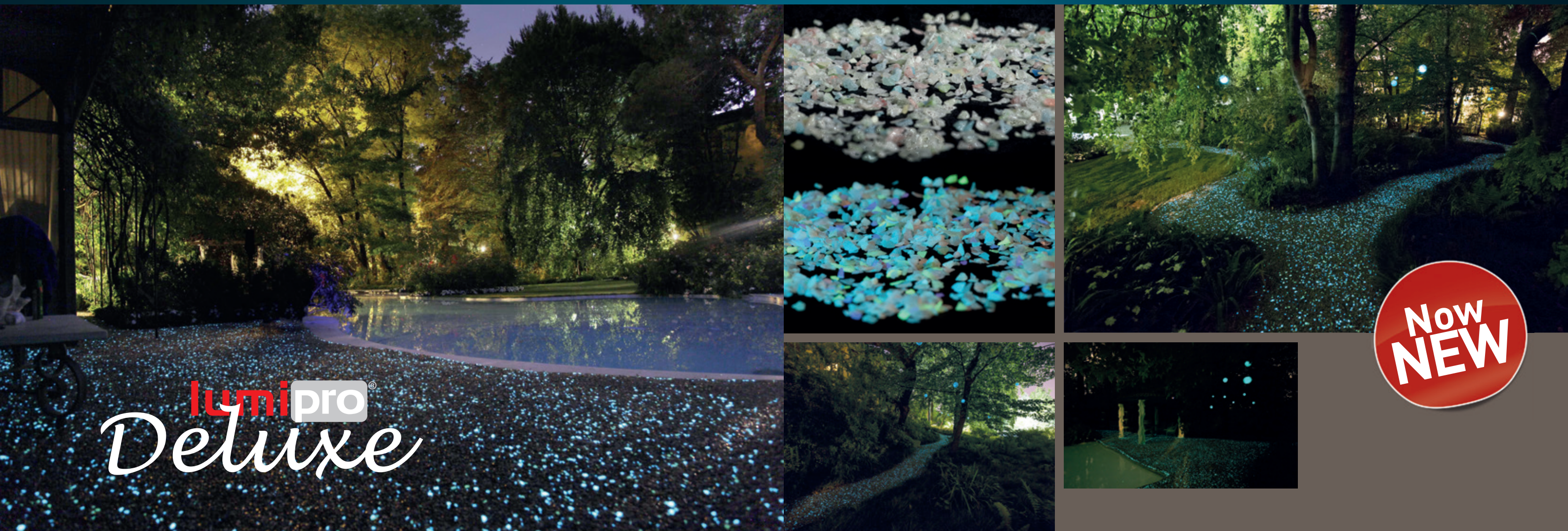
Order-No. 90.Y901+ 1.828,00

Pocket Lux 2
LMT Pocket Lux 2 for luminance measuring on the spot.
The tube features an opening of 20 mm and a resolution of 0.1 mcd/m².
Battery-powered.

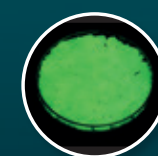
Order-No. 90.050001LMT 1.500,00



Impressive beautiful - Don't hesitate to contact us



lumipro
Deluxe



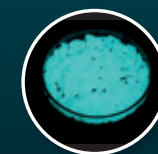
Breakage of glass/grit (yellowish green)

glass grit phosphorescent green, grain size 4-10 mm, weatherproof, for decoration or mixing into flooring, photoluminescent class C

VP = 1 kg

Order-No. 90.030001C

93,00 /kg



Breakage of glass/grit (yellowish blue)

grit phosphorescent blue, grain size 4-10 mm, weatherproof, for decoration or mixing into flooring, photoluminescent class D

VP = 1 kg

Order-No. 90.030002D

93,00 /kg



Correct Installation.
Perfect Quality.

You purchased a high-quality EverGlow® product. In order to ensure perfect visibility, permanent installation, and efficiency of our products, we provide some useful information for you in this leaflet. Please note that our standard products are generally designed for indoor use (exception: aluminum sign "Meeting point"). Should you require any products for outdoor use, we would be pleased to submit an individual quotation.

CLEANING - BASE AND SIGN

For installation by means of adhesion, the base must be even, clean, and free from grease. We recommend alcohol (e.g. isopropanol). Please pay attention to the provisions regarding occupational safety when handling alcohol. If it is not possible to correspondingly treat the base, the products have to be fastened by mechanical means (e.g. screws, rivets). When handling aluminum signs, please be aware that the edges are sharper than those of film signs.



INSTALLATION - USING EVERGLOW® ADHESIVE PADS

We recommend our EverGlow® adhesive pads made of sponge adhesive for installation of aluminum or other solid materials. Cleaning of base as described above. Use at least 4 adhesive pads (1 sheet) for one sign. Please note that there may be residues when removing the adhesive pads. This is why the position of the signs is to be checked carefully in advance. After having pressed the sign on the pad, it is no longer possible to reposition it without damaging the product and / or base.



**Convenient installation:
Adhesive pads from EverGlow®**

Order-No. 90.9129 0,85 (1 sheet = 4 pads))

www.shop.everglow.de

POSITIONING - Visible above the Door

Escape route signs must be installed in a reasonable place and be visible at any time. This is why escape signs must not be installed on escape doors since they may be open in case of emergency resulting in the directional arrow being no longer visible.



For further information on safety marking and positioning, please refer to DIN SPEC 4844-4 (www.beuth-verlag.de).

POSITIONING - Perfect Perceptibility

The respective direction of escape as well as information on fire protection equipment must be visible from any position in the escape route. There is a formula to calculate the perception width for correct sizing of the signs.

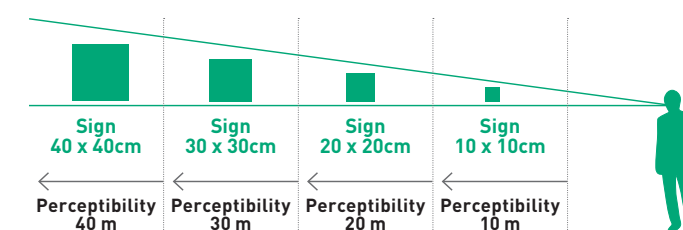
$$E = h \times z$$

E = Perception width

h = Sign height

z = Distance factor (100 for illuminated signs)

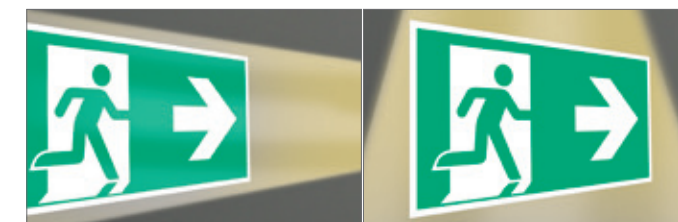
Please note that this formula is based on optimum sight conditions. In case of doubt, rather use a larger sign or a greater number of signs.



Further information can also be found in the German Guidelines for workplaces ASR A1.3 "Sicherheits- und Gesundheitsschutzkennzeichnung" (Safety and Health Protection Marking)

ACTIVATION - Light Incidence / Light Source

Photoluminescent products are activated by light sources comprising of blue light. Daylight, fluorescent lamps, and many LED lamps are suitable. If you have any questions which lighting intensity (in lux) of the product is sufficient or optimum, please do not hesitate to contact us. The former recommendation of DIN 67510 with 25 lux of a luminescent lamp with 4,000 K can no longer be applied safely due to the variety of different photoluminescent products and lamp types; but it is still a reference value. EverGlow® recommends 40 to 50 lux for permanent illumination of a HI 150 product. Please make sure that the signs are installed within the light cone. The more frontal the light beam, the better the loading result.



MATERIAL - Aluminum / Film

We use high-quality film as well as aluminum materials for our safety signs. However, alternative materials may be required depending on the ambient conditions. We would be pleased to advise you in this respect. All EverGlow® products comply with DIN 67510 and are in conformity with REACH.

EverGlow is a member of:
www.pspa.org.uk



Datasheets can be downloaded from www.everglow.de

Luminescent systems



Photoluminescent markings

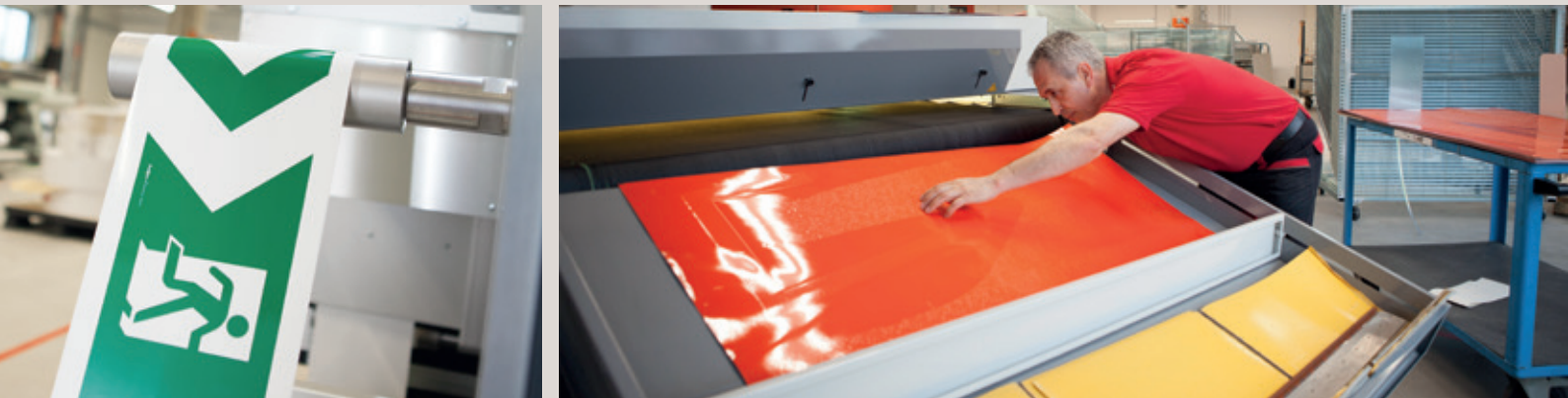
Luminescence technology opens up the possibility of experimenting with light and its effect.

Colour pigments are processed, which react to light and begin to glow on their own due to their chemical composition. The light wavelength at which the pigments used by us should respond is variable and is matched to the requirements profile of our customers.

Our development department has set standards which have created a strong position for us, for example, in the photoluminescent marking of escape routes and every kind of photoluminescent safety marking.

We hold a leading position with our EverGlow® and lumipro® brands. Our luminescent products are an ideal solution for the entire field of technical marking, especially for discreet marking.

Thus, for example, test procedures for UV signal transmitters and sensors are furnished with our UV-sensitive pigments.



Application areas

- Escape route marking according to national and international standards

Fire safety signs according to national and international standards

Optical safety guidance systems according to ISO 16069 and IMO

Floor path markings in airplanes
- Low-location lighting systems on passenger ships according to IMO directives

Design-oriented coatings and floor coverings

Protection against plagiarism

IR- or UV-sensitive test equipment

Promotional items

Order

Yes, we want to mark commendable!
Please deliver directly from the EverGlow®-catalogue.
Fax: +49 (0)7222 96 66 555



Order-No.	Article	Qty.	Price p. p.	Total price

General Terms an Conditions:
We noted the General Terms an Conditions
The purchase order applies to articles from the Catalog.

Please state the texts for individual signs
in a seperate list.

Net	
Sales tax	
Total	

Buyer

Company

Branch

Street / No.

Zip Code / City

Name / Division

Telephone / Fax

E-Mail

Amount of employees

☐ 50 ☐ 100 ☐ 250 ☐ 500 ☐ Sizer

Delivery: (please check)

☐ Please deliver the goods on favorable terms.

☐ We collect the goods. Please inform us, when the goods are ready for collection:

Tel: _____

Note:
Shipping costs depend on quantity, weight and distance. Please ask them separately. We will inform you after the order has been received.

assignment number (buyer)

Date

Signature

Over 20 years of competence



Spot on

To be visible or not to be visible, this question is frequently asked. You decide how you wish to be perceived and gain more attention with our groundbreaking technologies.

EverGlow® GmbH

Draisstraße 19 a - b
D-76461 Muggensturm
Tel: +49 7222 96 66 50
Fax: +49 7222 96 66 555
info@everglow.de

www.everglow.de